



YILPORT SUSTAINABILITY REPORT 2021

PRIVILEGE
BECOMES
STANDARD

www.yilport.com

Content

Global Environmental Data Target 2021

Yilport Global Environmental Performance

Yilport Global Social Performance

Yilport Green Economy Performance

Moving Forward 2022 and Beyond...

Sustainability Framework – Global Environmental Data Monitoring

As a starting point in our Sustainability journey, we have selected to focus on reducing the environmental exposures for the organisation through monitoring the monthly consumption according to the following. Using the last 3 years data as our baseline for this exercise.

Key Environmental Focus		Target 2030 & Beyond
Waste Management	<ul style="list-style-type: none"> Hazardous Non- Hazardous Cargoes 	To reduce waste by 10% based on average waste produced in the last 3 years.
Energy Consumption	<ul style="list-style-type: none"> Renewable Energy Non - Renewable Energy 	To reduce consumption by 10% based on average energy consumption in the last 3 years.
Greenhouse Gas Emission (GHG)	<ul style="list-style-type: none"> Scope 1 (Direct Emission from Owned/Controlled resources e.g., Combustion fuel) Scope 2 (Indirect Emission from Purchased Energy) Scope 3 (Indirect Emission resulted from activities not controlled by the organisation but the organisation is impacted in its supply chain) 	To reduce emission by 10% based on the average emission in the last 3 years.
Water Consumption	<ul style="list-style-type: none"> Water Inflows/ Withdrawal Water Outflows/ Discharges 	To reduce consumption by 10% based on the average consumption in the last 3 years

Moving forward, we will be mapping a 5 years period in order to establish good and reliable data with an automated tool.

YILPORT Global Environmental Performance

Our Achievement for 2021 against the previous years



Renewable & Non-Renewable
Energy
Year-On-Year Flat



GHG Emission
(Scope 1, 2 & 3)
Reduced by **6%** against
previous years

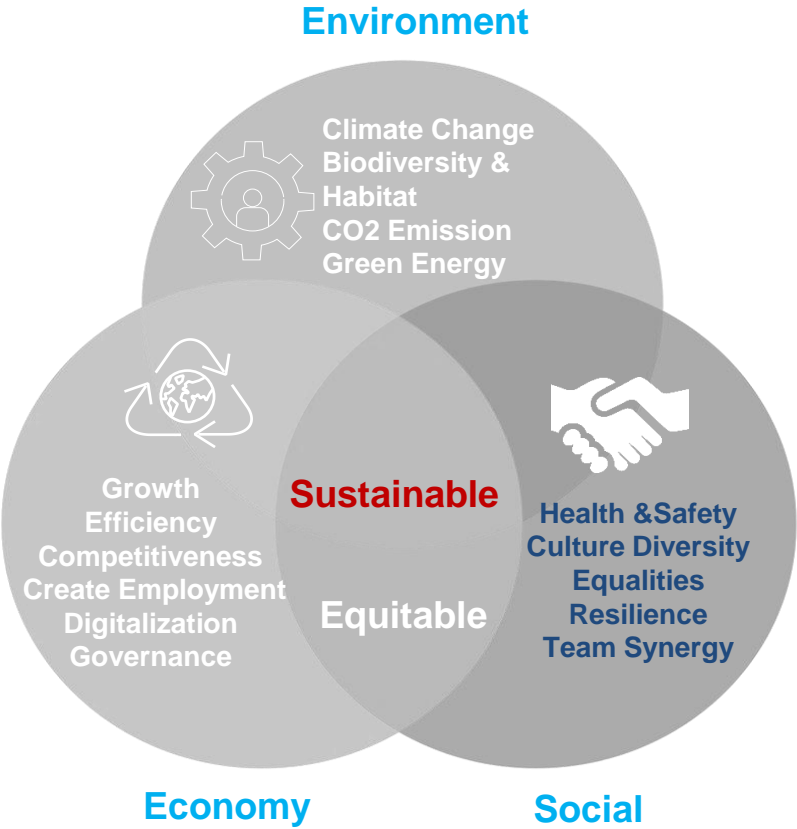


Water Consumption
Reduced **10%** against
previous years



Hazardous & Non-Hazardous
Waste
Reduced **9%** against
previous years

YILPORT Global Social Performance



HEALTH FOCUSED

- Health screening for all employees in Puerto Bolivar and all ports Turkey (Gebze, Gemport, Rotaport and Solventas)
- Regular Health-Related trainings conducted throughout our ports



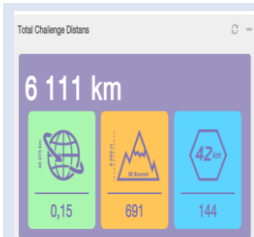
COMMUNITY CONTRIBUTION

- Puerto Bolivar port organised “Beach Cleaning” activities for their community.
- YILPORT Holding provided replanting 100K trees following the forest fires this summer in Turkey.
- YILPORT Holding Support “Deniz Temiz” (Clean Sea”) campaign – a program run in Turkey by Turmepa



SUPPORTING EDUCATION & WOMEN ORGANISATION

- Our group foundation – Zeycan Foundation organised free teaching of English to children from 13-18 years old.
- Supported End of Violence for Women campaign
- Gender diversity – We hired women crane drivers in Gavle port and tallyman in Turkey.



HEALTHY WORKLIFE

- YP Sweden organised “Health Challenge” which runs for 8 weeks for all its employees
- In their new office, a mini-gym facility is provided for their employees to cultivate healthy work-life balance

YILPORT Proud to Be COVID SAFE CERTIFIED PORTS



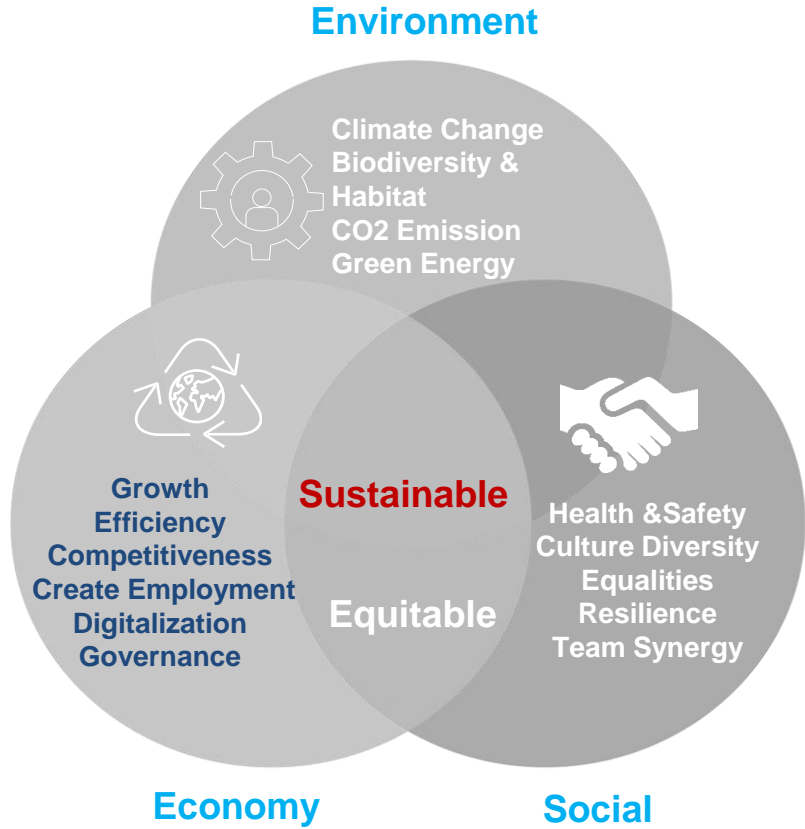
Yilport Holding has an obligation to ensure when your employees, customers and business partners return home safely to their families.

In this COVID-19 pandemic landscape, our ports are now certified **COVID-19 Safe** Environments.

Independently assessed and certified by government and government appointed accreditation bodies.

Ensuring Workplace Safe for All is our Outmost Priority!

YILPORT Green Economy Performance



IMPROVING GOVERNANCE PROCESS

- Rolled out the revised EU GDPR to our EU ports
- Revised the existing Employee Code of Conduct



CRANE OCR GATE OCR RAIL OCR

- Gemport
- Gebze
- Oslo
- Puerto Bolivar



CLOUD COMPUTING

- Optimising our software, shifting away from traditional focus on performance and responsible innovation
- Upgrading our TOS system and implemented SAP- BRIM to our operating process.



TRUCK APPOINTMENT

- Gemport
- Gävle
- Oslo
- Puerto Bolivar
- Leixoes

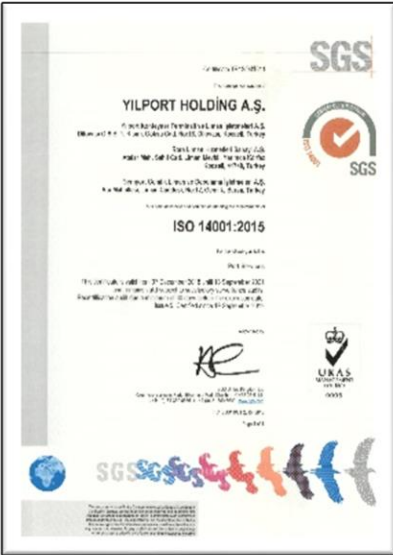
ISO Certifications

Most of our global ports are ISO certified. We are working towards to certify all our remaining ports by 2023 -2024. In addition to this plan, we are also exploring to add Energy Management certification (ISO 5001) to our ISO Certification portfolio and eventually aimed to obtain ISO 14064-1 certification.

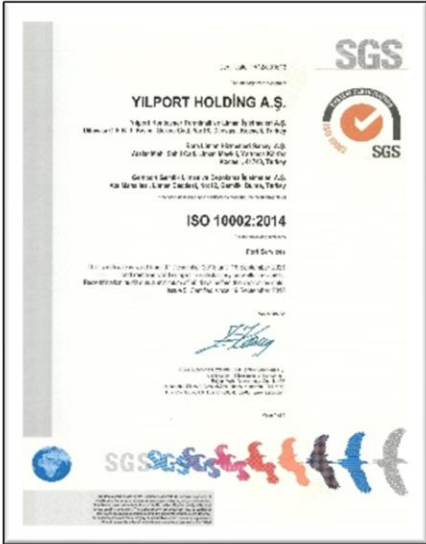
Quality
Management System
ISO 9001



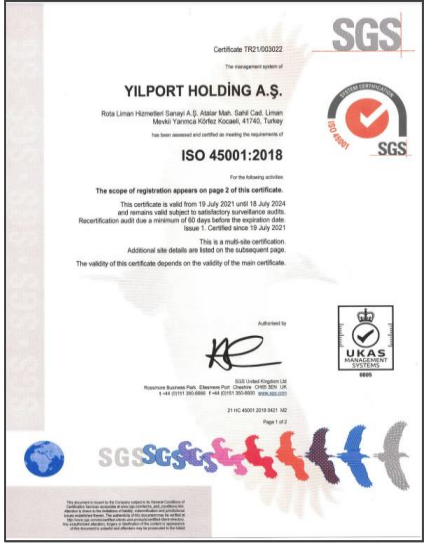
Environment
Management System
ISO 14001



Customer
Management System
ISO 10002



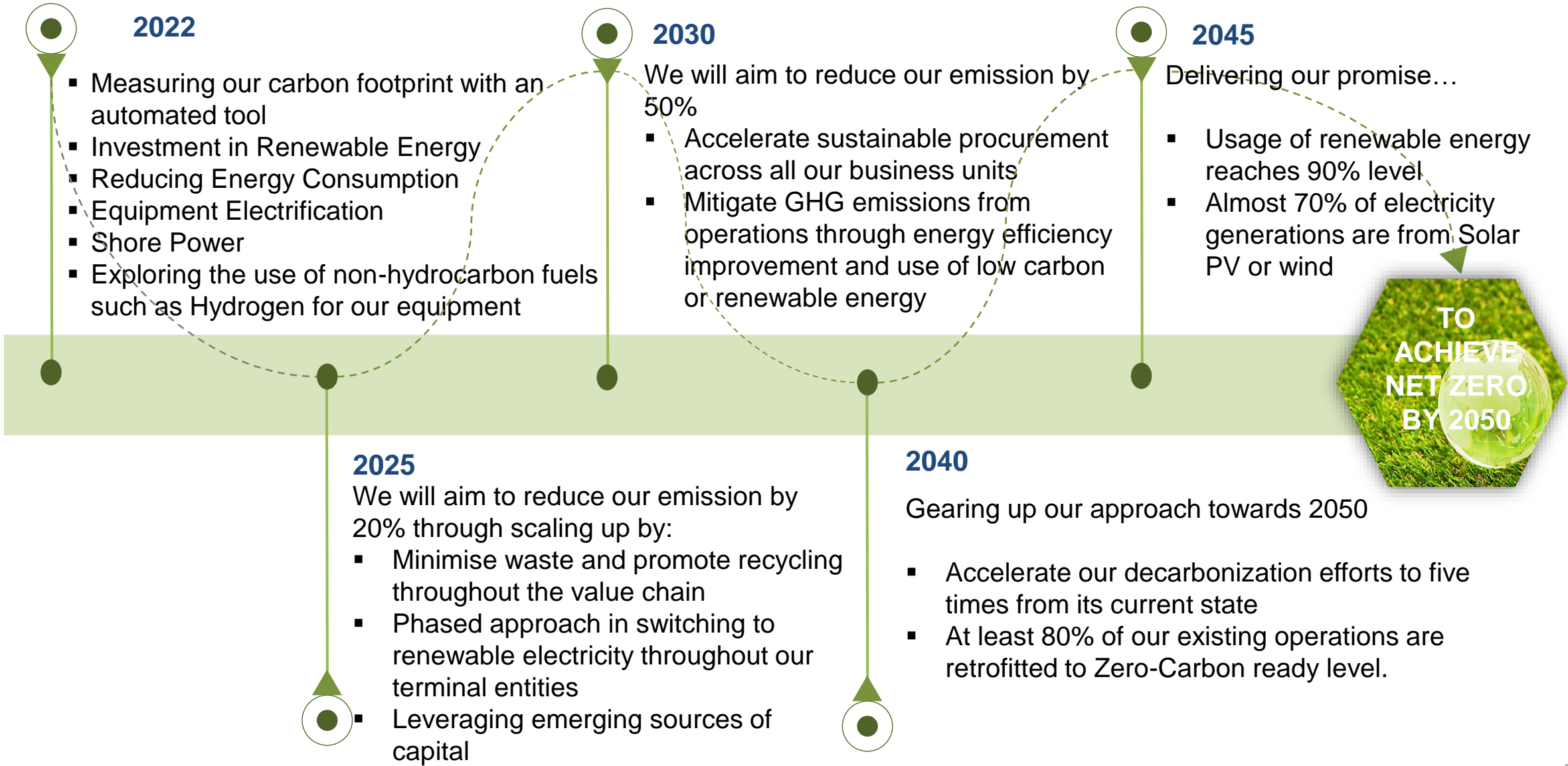
Health and Safety Management
System
ISO 45001



Chemical in Tanks Certification
CDI-T



YILPORT COMMITMENT TOWARDS NET ZERO BY 2050



ESE Roadmap 2022 (Focus Areas / Initiatives)

GLOBAL HQ

ENVIRONMENT	SOCIAL	ECONOMY
<ul style="list-style-type: none">▪ Automate the environmental data information (exploring tools)▪ Accurate measurement tools for Sustainability Input (Energy (incl. GHG Emission, Water & Waste) & training in using it▪ Improve carbon neutrality which includes operational efficiencies, retrofit initiatives and renewable energy▪ Re-organize and standardize current policies, procedures and risk managements▪ Strengthen existing framework to support Sustainable Financing requirements	<ul style="list-style-type: none">▪ Improve and promote Health and Safety culture in workplace through training and activities▪ Active participation of all terminals on World Safety Day▪ Work with HR and Support in delivering sustainability training▪ Organize a global challenge/initiatives for all employees (at least 1 activity for each ESE pillar	<ul style="list-style-type: none">▪ Supporting in process re-engineering with the respective department▪ Standardize basic process requirements – ISO certification▪ Support in automation of basic processes with the goal to have better efficiencies▪ Promoting ESE through monthly newsletters and social media platform