

CONNECTION

YILPORT TURKEY Q3-2016 NEWSLETTER

2016-3



PRIVILEGE IS NOW AT GEMLIK YILPORT'S NEW TERMINAL STATE-OF-THE-ART YILFERT TERMINAL



EXPANSION YEAR OF:
YILPORT GEBZE

YILPORT'S GRAIN TERMINAL:
YARIMCA

INFINITY:
**PRIVILEGE BECOMES
E-STANDARD!**

YILPORT Gebze is going one step further with it's unique **LCL cargo service**



LCL CARGO SERVICE AT OUR ONE-STOP-SHOP SYSTEM



YILPORT Gebze is going one step further of its competitors as an only LCL service provider and previledges that it offers to customers among Izmit Gulf region in Turkey.

While its accesibility provides cost efficiency, it also meets with small and large scaled industrial needs among the region.



With specially designed closed warehouse, rack system and its experienced team which is just assigned for LCL service enables to provide all operations related to LCL service like labeling, packing, palletizing and courier service with its one-stop-shopping service range.

While holding of operations in the main terminal saves the time of our costumers it also enables them to handle their cargos in the safest way.

Throughput: YILPORT Gebze Container Terminal



Throughput: YILPORT Gebze General Cargo



Seniority Awards Ceremony



As a YILPORT Holding tradition, Seniority Awards were presented to 48 employees who have made a tremendous effort to our company in Gebze and Yarımca Terminals for 10, 15 and 20 years of service. The ceremony was organized during lunch time at Hepsagone Hotel in June.

The certificates and badges that designed as diamond, emerald and sapphire according to seniority level were presented by YILPORT Gebze General Manager, Efe Hatay, to 41 employees who completed 10 years, 6 employees completed 15 years and 1 employee completed 20 years at the ceremony. The celebrations finished with cake-cutting ceremony by altogether.

We would like to thank each and every one for their valuable contribution and commitment along the way to develop our company and organization in a great deal.

YILPORT Gebze Welcomes Sakarya University



YILPORT Holding that welcomes the university trips in order to introduce our port and sector to new generation young talents, hosted Sakarya University International Trade department students. Technical trip that was arranged in the scope of Logistics and Supply Chain lesson of International Trade department students occurred with the participation of 20 students.

The students had the opportunity to receive to the point and crucial information about our company and the port industry which an effective presentation was made by our Business Development Team. After the presentation, students were informed about our port and operation processes by site visit together with our Operation Team.

Students were also accompanied by our HR Team during the visit and also acknowledged about the job and/or internship opportunities that YILPORT offers for students and newly graduates. Students had opportunity to see the transformation of the theoretical knowledge that they acquired at school into practical knowledge and also they had a new perspective about the port sector

Expansion Year of YILPORT Gebze

“YILPORT Gebze is Ready to Handle +21,000 TEU Vessels”



Main Terminal

With its new expansion, Berth II, Yilport Gebze now can handle the biggest containerships. The length of the berth is 450 meter, the draft of the berth is –17 meter and the new 4 Mitsui Quay Cranes – STS are 23 row handling capacity is already started to operate containerships.

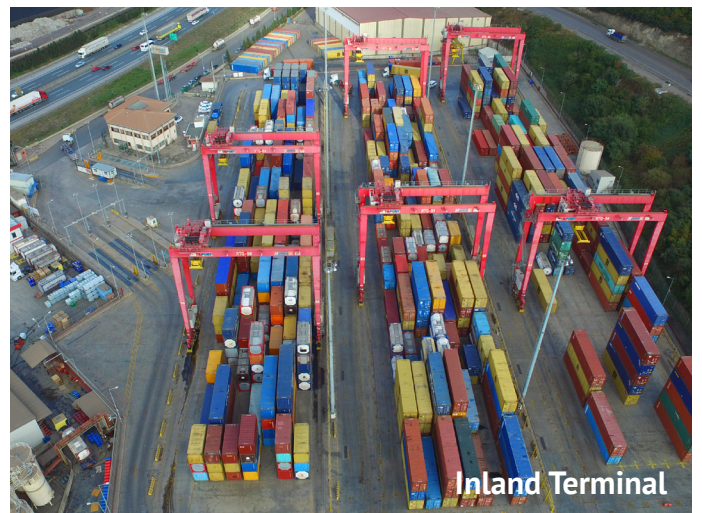
YILPORT Gebze is located on the Northeast coast of the Marmara Sea, and in the economic heartland of Turkey with over 50% of the Turkish GDP in a 200 km radius. The port is well connected to the hinterland through the Trans-European Motorway (TEM) and the Istanbul-Ankara Highway (E-5/D-100).

In 2016, YILPORT Gebze reached 1 million TEU capacity with its newly constructed berth which enables to operate 21,000 TEU vessels. YILPORT offers integrated port operations whereby customers are able to take advantage of combined services in order to minimize cost and maximize the velocity of cargo flows. Container, General Cargo, Liquid Cargo, CFS station, bonded and non-bonded yards, covered and opened warehouses, logistic services are simple indicator of YILPORT's multi purpose terminal operator concept together with one-shop-shopping service range.

• There are 6 fully operational berths with 1,455 m length with its state-of-the art equipped 8 post panamax shore cranes and 21 environmentally friendly RTG cranes by aiming the highest efficiency in operations. YILPORT Gebze, offers below services with total of 330,000 m² yard;



Container Terminal



Inland Terminal

• Container terminal services in bonded and non-bonded yard with 1,000,000 TEU annual capacity.

• YILPORT Gebze aims to become a global logistics port cluster with integrated terminals, dry terminals and warehouses for the optimum customer service in line with our value proposition.

• OCR gate-in and gate-out system

• Less than 12 minutes dwell time-pick up express service.

• 546 groundslot area

• 3.276 TEUs capacity .

• 6 Rubber Tyred Gantriess (RTGs) respectively Stacking Capacity is 7+1 width and 6+1 high.


CFS Station

Warehouse

Container freight station (CFS), enables customers to make

- Loading and discharging operations in nonbounded area
- Bonded section in general cargo terminal area for import customers to make loading and discharging operations.
- Container stuffing, unstuffing, weighting, sampling, inspection, full inspection.

- Two separated operational area, which cover
- 6.000 m² in total.
- Unbonded CFS area s dedicated to stuffing operations

The custom-bonded CFS Area is located in the General Cargo Terminal and serves import customers for unstuffing and inspection operations.

Warehouse services

- Acceptance of goods,
- Quality control,
- Placement of products,
- Stock control,
- Order preparation

can all be performed in covered and opened storage yards.

Different type of materials,

- Coils, aluminium pipes, steel bars, construction materials, clay, including heavy construction equipment, packed with various methods (bigbag, palletized etc.)

can be loaded and discharged by our expert staff and dedicated equipment and securely stored in properly slotted racked warehouse.

YILPORT E-5 terminal which is only 7 kms away from the main terminal provides

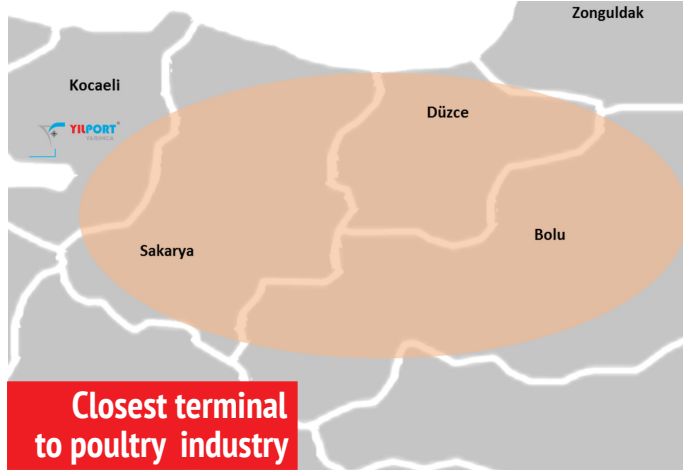

E-5 Terminal

- Empty container storage, handling, washing, sweeping,
- Reefer Container PTI, reefer monitoring, repairing, reefer container spare parts
- Flexitank service
- 100,000 m² dedicated area.

Full complement of cargo handling equipment

- 2 Reach Stackers
- 1 ECH
- 10 Forklifts.

YILPORT's Grain Terminal Yarimca



Throughput: YILPORT Yarimca Terminal



Turkey's N#1 Grain Terminal is located in the heart of poultry industry – Yarimca Izmit, with its easy connection to the main roads.

With its 23 meters of height concrete terminal is the highest grain storage of Europe, Med, Black Sea and Middle East has the capacity of 120,000 tons of grain.

8 Bays allows to storage different type of goods.

Grain Terminal Operations

- Productivity 1,000 tons per hour per vessel
- 2 Siwertell grain handling unloader cranes which maintains operational efficiency in ships of different sizes and exhibity in handling different kinds of grain products.
- 1 Liebherr MHC with 30 tons lifting capacity which boosts the operation
- State-of-the-art dust preventive covered belt conveyor system is environmentally friendly, it provides discharging operations to be held sanitarly as well.
- Truck loading is conducted simultaneously weighting via scales in exclusively designed 8 truck loading stations. Automated truck recognition device is given to customer trucks, loading of unrecorded truck is rejected automatically by the system. Entire operation flow is conducted through PLC and SCADA automation system.



Throughput: Gempport Container Terminal



**90.772 TEU
handled at
YILPORT Gemlik
by Q3**

Throughput: Gempport Ro-Ro Terminal



**70.575 CEU
handled at
YILPORT Gemlik
by Q3**

Gempport Beats New Records



Our unique Ro-Ro terminal in Gempport has broken a record driven by a surge in export side. With new vehicle sales and production in Marmara region, Gempport's vehicle-handling volumes are running out of room.

With the unique multi storey Car Park in Gempport enables key customers to consolidate large volumes in a single terminal. The strategic location of the car park adjacent to the berth increases the vessel productivity and decreases the fuel cost for the customers.

Our dedicated team of well-trained professionals drive the vehicles from the vessel to the car park damage free.

Exporting latest models of FIAT since 2015, Gempport has began to export its station wagon version by July, 2016. One of the biggest automotive exporters of Turkey, Fiat is planning to export 700K cars in collaboration with Gempport during the year. Thus, Gempport reached all-time-high number with 33.531 CEU in a single month by June, 2016 and is expected to beat new records on Ro-Ro business due to new SW model of FIAT.

Health, Safety and Environment are our First Priority



IMS (Integrated Management System) Awareness, Environment Awareness, and Hygiene Trainings were delivered to Gempport employees between 11-15 July 2016.

At EYS Awareness Training, employees are informed about ISO 9001, ISO 14001, ISO 10002 ve OHSAS 18001 quality systems by Ozan KARADEMIRLI, Burcin OZDEMIR, Benu SATIR, Aytac UCKARDAS and Yasin KAYA who are Internal Auditors after participating in Awareness and Internal Assessor Training.

Ekoced delivered Environment Awareness Training to inform employees about importance of environment and outcomes of environmental pollution, variety of wastes resulting in environmental pollution, hazardous and nonhazardous waste management, and environmental emergency cases.

Marmara ISG delivered Hygiene Training to inform employees about general features of viruses and infections that poses risks to community health, their mode of transmission, how they can plague according to different job classes, disease symptoms and protection ways.

YILPORT Gemlik's YILFERT Terminal is Ready For Operations



GAME CHANGER

NEW TERMINAL AT GEMLIK YILPORT GEMLIK - YILFERT

The newest green field project completed and delivered at Gemlik next to YILPORT Gemlik-Gemport, extends the YILPORT Gemlik container handling capacity by 600,000 TEU. With this new terminal Gemlik Bay is now able to handle new generation of Ultra Large Container Vessels (22,000 TEU) with its 750 meter linear berth, -17 meter draft and 23 row reach capacity state of the art 4x Mitsui quay cranes. YILPORT invests heavily to generate the highest productivity and world class service in the region. YILPORT Gemlik-YILFERT Terminal construction has started in early 2011 and together with its sea terminal and new gate and connection road total investment is 200 million USD. Currently, the terminal offers more than 82,000 square meters of open bonded area, and 3,000 square meters of closed bonded area. With the multi purpose terminal philosophy of YILPORT, YILFERT Terminal will provide services to Container, Bulk, General Cargo and Liquid vessels.

LOCATION;

YILPORT Gemlik's new terminal is the only terminal in the Gemlik region to service Ultra Large Container Vessels. The new terminal added to the competitive edge of YILPORT Holding in the Gemlik industrial complex. YILFERT terminal is also capable of offering vessel loading via bulk containerization operations.

- Located in 1 km to Bursa Free Zone
- Best location and productivity for Black Sea transshipments
- Located in the heart of Automotive, Textile, Mining incl.marble, Tiles industries
- 60 Minutes to Gebze by new Izmit Bay Osmangazi Bridge
- 4 hours to Izmir
- 2,5 hours to Eskisehir

- 4 Mitsui Super-Post-Panamax 23 row out reach capacity QC's (gantry cranes).
- 750 meter berth also offers 17 meters of draft for largest vessels of the world.
- 7 RTG (Rubber Tired Gantry) cranes of the new terminal are all environmentally friendly.
- YILFERT terminal guarantees 25 moves per hour and reached to 38 moves per hour during the test period. Owing much to the ongoing performance development tests, the additional 4 cranes can be supplied due to the crane distribution which escalates performance to 33 moves for per hour together with the regular day shift terminal traffic.

Multi Purpose Yard Operations in Gemlik



The dry bulk terminal of the expansion site offers 10,000 square meters of mineral warehouses, 15,000 square meters of marble warehousing, and 20,000 square meters of ceramic warehouses. Dry terminal also consists of an empty container depot, a mineral yard with 360,000 tons of total capacity, a ceramic yard of 200,000 pallets capacity and a marble yard that has 600,000 tons of annual cargo handling capacity.

The warehouse doubles its performance by preventing time loss with brand new automatic conveyor system which is constructed to serve its mineral customers in a better way.



Conveyor System

Inventor of this conveyor system is executive vice president and COO of YILDIRIM Holding Inc. Mehmet YILDIRIM which is one of the YILDIRIM brothers. Owing to his patented design operations held are now more time effective.

The warehouse consist of six halls of each to be 285 m2. The total stuffing capacity is 45.000 tons and it is possible to load and weigh 9-10 cntr/hour with conveyor system and automatic loading machine. The daily capacity increase enabled answering more flexible, fast and constant the customers.



Mineral Warehouse



GLOBAL REACH, LOCAL STRENGTH

TUGBOAT & PILOTAGE SERVICES

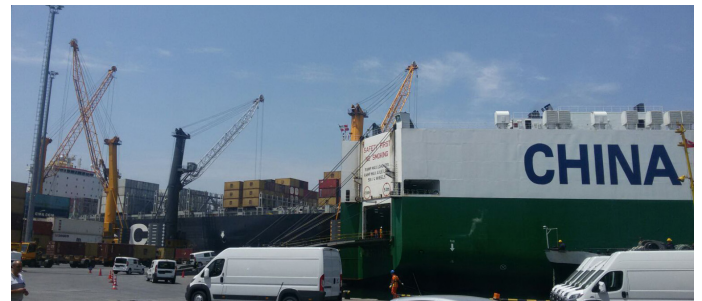
pilotage@gemport.com.tr

YILPORT Gemlik - Gemport is Providing Exclusive Ro-Ro Service to Its Customers



As one of the most biggest Ro-Ro terminal in Turkey ,Gemport is providing exclusive Ro-Ro service to its customers. Gemport Ro-Ro terminal invites you to live YILPORT experience with its state-of-the-art equipment and experienced operation team with the 12,000 vehicle storage capacity which is only a couple of steps away from the berth.

Gemport is one of the most important ports of the Turkish maritime sector with its strategic location, vast hinterland, and rational investments. Since the port was founded, its contribution to the Bursa region and national economy has been steadily increasing. As well as having the container services as its main business operation, Gemlik is the crucial exportation port of the automotive sector giants in the Marmara region. BEST QUALITY approved by FIAT, OPEL, PEUGEOT, CITROEN and RENAULT...



Gemport has a weekly internal audits just for Ro-Ro operations to follow up the quality level of the conducted operations. Exclusive designed audit form format provides operational efficiency which enables to make operations for multiple branded cars and vehicles at the same time. The form consists of several evaluation segments such as parking track, personnel performance, handling index, vehicle allocation and security. After each audit, the result are released to each party at the terminal, then follow up the non-conformities with corrective action plans.



Gemport facilitates its operations with inhouse development of information technology. Owing to this technology, operations held are cost and time effective with less shifting and uplifted vessel planning is provided by using hand terminals.



This systematic coordination is designed to meet all requirements of customers. YILPORT's commitment to solution oriented operational excellency is supported with integrated management systems policy and quality certificates. Gemport functions as a gateway for automotive giants in its hinterland by serving fast and high-quality service to Ro-Ro vessels.

Gemport is one of the top ranked terminals in vehicle handling by its multi-storey car park in bonded and non-bonded areas.

YILPORT Holding Secures 50-Year Concession For Ecuador's Puerto Bolívar



YILPORT Holding Secures 50-Year Concession For Ecuador's Puerto Bolívar And Commits To Invest USD 750 Million In The Port

YILDIRIM Group's subsidiary YILPORT Holding secured the rights to Puerto Bolívar Port in Machala City, Ecuador. In the 50-year concession, YILPORT committed to invest USD 750 million in the port. The concession agreement was signed on 8 August inside Puerto Bolívar. More than 1000 people attended the signing ceremony. The deal marks the largest ever Turkish investment in Ecuador. YILPORT Holding commits to invest USD 750 million in 5 phases for the development and modernization of the port, creating Latin America's largest container terminal with 2,500,000 TEU annual container handling capacity.

YILPORT Holding added the 21st port to its global portfolio in its drive towards being ranked among top 10 international port operators by 2025. The signing ceremony took place on 8 August in Puerto Bolívar port in Machala, Ecuador. Puerto Bolívar is the exit door of the export products of the rich region of the Province of El Oro and part of the provinces of Azuay, Canar, Guayas and Zamora and northern Peru and is the natural entrance of merchandise for those regions.

An efficient instance of public-private partnership, this concession deal also marks the investment record by a Turkish entity in Ecuador. YILPORT Holding will transfer its global expertise from 21 terminal operations around 8 countries into Puerto Bolívar as the agreement goes into effect. Puerto Bolívar will deliver superior service above international standards, and will be transformed into the largest container terminal in Latin America.

"USD 230 Million Investment In Phase I"

Puerto Bolívar port is one of the world's largest shipment points for fruits and seafood. YILPORT will invest a total of USD 750 million for the expansion and modernization of the port. Development program will be completed in 5 phases. Initially, YILPORT will

"Handling capacity will reach 2,500,000 TEU "

A new, 450-meter long quay will be built. The terminal will be equipped with modern infrastructure and cranes. Consequently, the largest container ships of the world will berth and receive services at Puerto Bolívar. Upon completion of 5 investment phases, the annual container handling capacity will reach 2.5 million TEU. Eventually, the port will become the largest and the most advanced state-of-the-art container terminal on the Pacific coast of Latin America. Puerto Bolívar will boost the foreign trade volume of Ecuador, and will constitute a strategic role in the global network of YILPORT Holding.

The handover process commenced following the signature on 8 August, to conclude in 90 days. Expected day for operation start up is 1st of December 2016.

invest USD 230 million in the first phase, which will span 3 years. The dredging work will deepen the draft from 10 meters to firstly 14 meters, and then to 17 meters.



YILPORT Holding Won the International Investment Award



11th Golden Anchor Award ceremony held at Sheraton Hotel Atakoy Istanbul in 2nd of September. YILPORT Holding won the international investment award with four deal closing agreement for Tertir, Solventas, Sweden and Ecuador. International Maritime Organization (IMO) and Marine Environment Protection Committee (MEPC) Ambassador Arsenio Dominquez presented award to YILPORT Holding Chairman Robert Yuksel YILDIRIM. Mr.YILDIRIM gave an inspirational speech to industry giants and senior officials.

"I have chosen what is challenging. I have chosen the places where growth is stopped. Because, I told to myself that if I make a difference as a Turk within these places and show this, other locations will be much more easier for me. Now as a Turkish power, we are in Europe, Latin America and Middle East."

YILPORT is shortlisted with Global Logistics Center at Lloyd's List Awards



One of the most prestigious events of maritime industry, the Lloyd's List global awards took place at the National Maritime Museum in Greenwich, London on 28th of September. Most of the executives of maritime industry giants participated the event.

YILPORT Holding is shortlisted in the maritime digital innovation category with Global Logistics Center as a game changing innovation. YILPORT Holding's CEO Christian BLAUERT, CMO Erhan CIOGLU and GM of YILPORT Gempore Antonio BARBARA attended to the event. YILPORT Holding is committed to deliver supreme terminal service to its customers, powered by high technology investments, and in-house innovations. Global Logistics Center in Gebze is a groundbreaking innovation and one of its kind in the industry, delivering planning and control for YILPORT's terminals from Turkey.

Transitex made the first ever shipment of Spanish stone fruit arrive at China



Transitex has become the first logistics operator who forwards container of plums from Spain to China with collaboration of its export customer company Campo y Tierra del Jerte.

The cargo left Plasencia, in the Spanish Extremadura region, and was loaded at the Port of Algeciras in July 2016, from which it followed by sea to Shanghai.

An unprecedented logistical operation, with a final result that left everyone involved proud and satisfied with the achieved goal. This operation also launches a big opportunity for the Iberian fruit exporters, that now may explore the possibility of entering the giant Chinese market.

YILPORT Customer Platform is Active for Swedish Customers Now



Within YILPORT Global philosophy we take care of our customers under the guarantee of ISO10002 certificate.

Activated on YILPORT's terminals in Turkey as pilot region on 2015, Vtiger CRM / Trouble Tickets module has become an application enables customers to reach YILPORT easily and faster solutions.

YILPORT customers now can deliver their demands, complaints or appreciations for our terminals immediately through our website, www.yilport.com or buttons under business card signatures.



YILPORT[®]
HOLDING INC.

Fastest-Growing International Terminal Operator



TURKEY: GEBZE | DILOVASI- SOLVENTAS | GEMLIK- YILFERT | GEMLIK- GEMPORT | YARIMCA- ROTAPORT

MALTA: MALTA FREEPORT **SWEDEN:** GÄVLE (GCT & BSG) | STOCKHOLM NORD

NORWAY: OSLO **SPAIN:** FERROL | HUELVA **PERU:** PAITA **ECUADOR:** PUERTO BOLÍVAR

PORTUGAL: LISCONT | FIGUERA DA FOZ | LEIXÕES | SOCARPOR | SADOPT | TERSADO | SOTAGUS

Mind the Gender Gap

How These Women are Driving Change

Whether it is Planning, HSSE or Operation at the yard, these female terminal workers reveal how they are on track to disprove outdated female stereotypes. Customers, terminal employees and suppliers can rest easy on their cargoes with this team of exceptional women at the helm.

YILPORT's Human Resources Department initiated a gender equality strategy and created a balance among the Turkish terminals in order to provide equal rights and opportunities for everyone. Having a background of male domination in the sector, though, more women are working in the industry than it used to be. We talked with women who are proof that females are now driving out old ideas.

Begum Bayrak



I have been working as a Planning Assistant Specialist since August 2015. I had seen a bunch of colorful boxes on the screens on my first day here and they looked unfamiliar to me. Radios, announces aroused my curiosity.

A family environment rippling through here and everybody is helpful as best as they can. This has been really effective for my adaptation. The increase in the number of female employees changed the culture of industry.

Gülner Erdoğan



I graduated from econometrics and I am working as a Reporting Specialist for almost 2 years. I am one of the first female employees in planning. I want to advance in logistics field and I was so lucky that I started in port sector which is the pearl of transportation. YILPORT has been a good school to me.

We are a very young team in YILPORT and we are working together to solve any problem. Thus, this it accelerates learning process of each of us. So, communication works very well in this department.

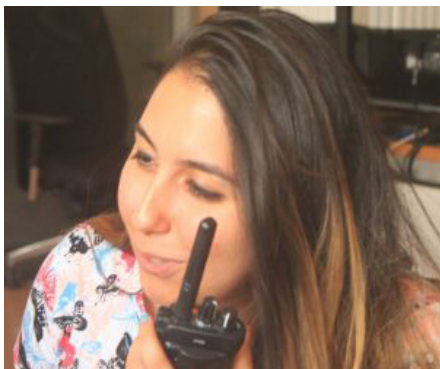
Cansu Karabiyik



I have been working working in GLC for only 5 weeks. Actually I am mechanical engineer. Communication is very strong in here. There is a good working environment.

I spent some time in yard and I received very gentle attitude from everyone even though Turkey is not accustomed to see woman employees in yard. I think that more communication is needed. Women can solve many communication problems at yard.

Nilüfer Volkan



I am responsible for Oslo planning but supporting general planning processes as well. I graduated from Maritime Faculty and have a strong passion for ports and terminals. I worked in a vessel for a year before coming to YILPORT.

I loved terminal planning and people here. I always believe that communication is more important than knowledge. Therefore, I do pay attention to my communication on the radio and develop my foreign language. The unique experience and know how we get here gives us ability to work globally.

Ebru Genç



I have been working in GLC for 5 months. I am very happy to be in YILPORT and every morning I come here very happily. The biggest reason for this, I can get an answer to every question and workmates are helping me a lot.

During the orientation, I met only woman tally clerk in yard and I am so glad. I think that she should be there and I wish an increase in the number of woman. I beat the big drum YILPORT's balance of gender equality.

Zehra Dünder



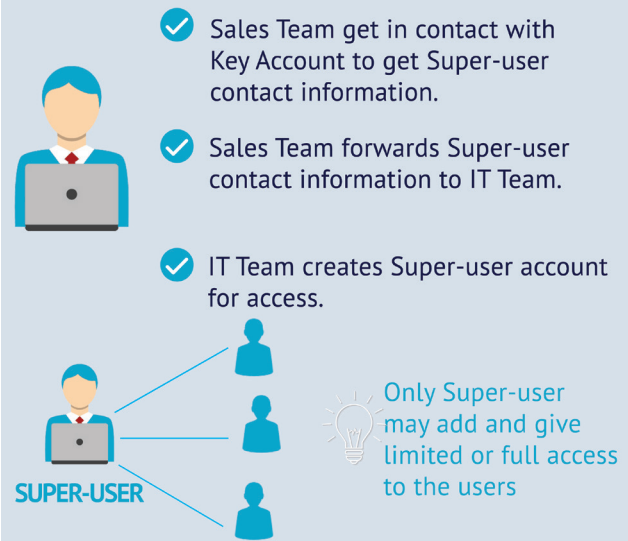
I am an industrial engineer and the planning that I know is production planning. I have experienced very different planning here, container and yard planning were very unfamiliar for me at first sight. However, I loved the work and the most important fact for that was my colleagues.

I have adapted in short time owing to self-reliance, trust and encourage that they gave me. They have taught me the job devotedly and I owe my success and progress to them.

Reaching the privilege is just one click away; INFINITY <http://infinity.yilport.com>



SUPER-USER




YILPORT continues to achieve another significant breakthrough innovation in technology. Infinity application creates a system which you can display the information of container movements. The principle goal of Infinity is to enable the customers to improve their service quality and decrease their workload by giving them instant access to the information they need. Infinity presents different data content to the different customer types. This cost-free, multi-user portal is utilized by all YILPORT customers that adds value to the customers and the company.

Privilege becomes E-standard!

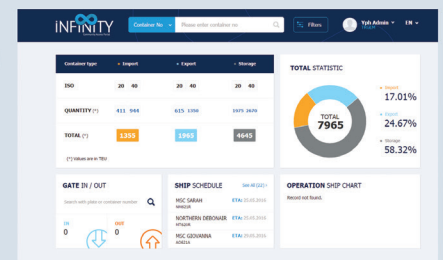
- Go to YILPORT Holding Infinity Page: <https://infinity.yilport.com>
- Select your terminal and follow the steps below.

BENEFITS OF INFINITY

- 
- ✓ Greater efficiency
 - ✓ Better service provision
 - ✓ Better, more transparent planning
 - ✓ More rapid throughput times
 - ✓ Optimal re-use of information

SMART DASHBOARD

3



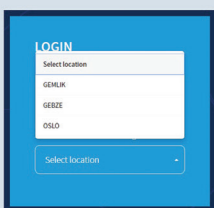
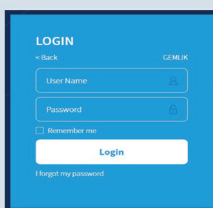
There are 3 main Business Layers in dashboard;

- ✓ Search & Filters
- ✓ Container Details
- ✓ Gate Movements Ship Schedule & Operation Ship Chart

SEARCHING CATEGORIES

*You may search in 4 categories Number of your container, bill of lading, booking and truck.

HOW TO LOGIN

- 1 
 - 2 
- ✓ Select the Terminal
 - ✓ Enter your e-mail address & password, Click "Log In"



- Terminals
- ▲ Transitex Branches
- ▲ Transitex Agents

GLOBAL REACH

YILPORT Holding was established in August 2011 to combine the port and container terminal operations of **YILDIRIM** Group under one roof.

The Holding has a portfolio of 6 terminals in Turkey, 8 in Portugal, 2 in Spain, 1 in Peru, 1 in Malta, 1 in Norway, 3 in Sweden and 1 in Ecuador.

Also Transitex, a global forwarding and support services company specialized in refrigerated cargo is part of YILPORT portfolio.

TERMINALS IN OPERATION

Turkey

Gebze , Yarimca, Gemlik, Gempport, Gebze E-5

Malta

Malta Freeport

Norway

Oslo

Sweden

Gavle, Stockholm Nord, Baltic Sea Gateways

Portugal

Liscont, Figuera Da Foz, Leixoes, Socarpor, Sotagus, Sadoport, Tersado

Spain

Huelva, Ferrol

Peru

Paita

Ecuador

Puerto Bolivar

Contact Us:

YILPORT HOLDING Inc.



YILDIRIM Group

