

CONNECTION

YILPORT HOLDING'S

STAY CONNECTED

4

YILPORT IBERIA
GREETES NEW
CRANES

16

CONTAINER
VOLUME RECORD
AT GEMPORT

28

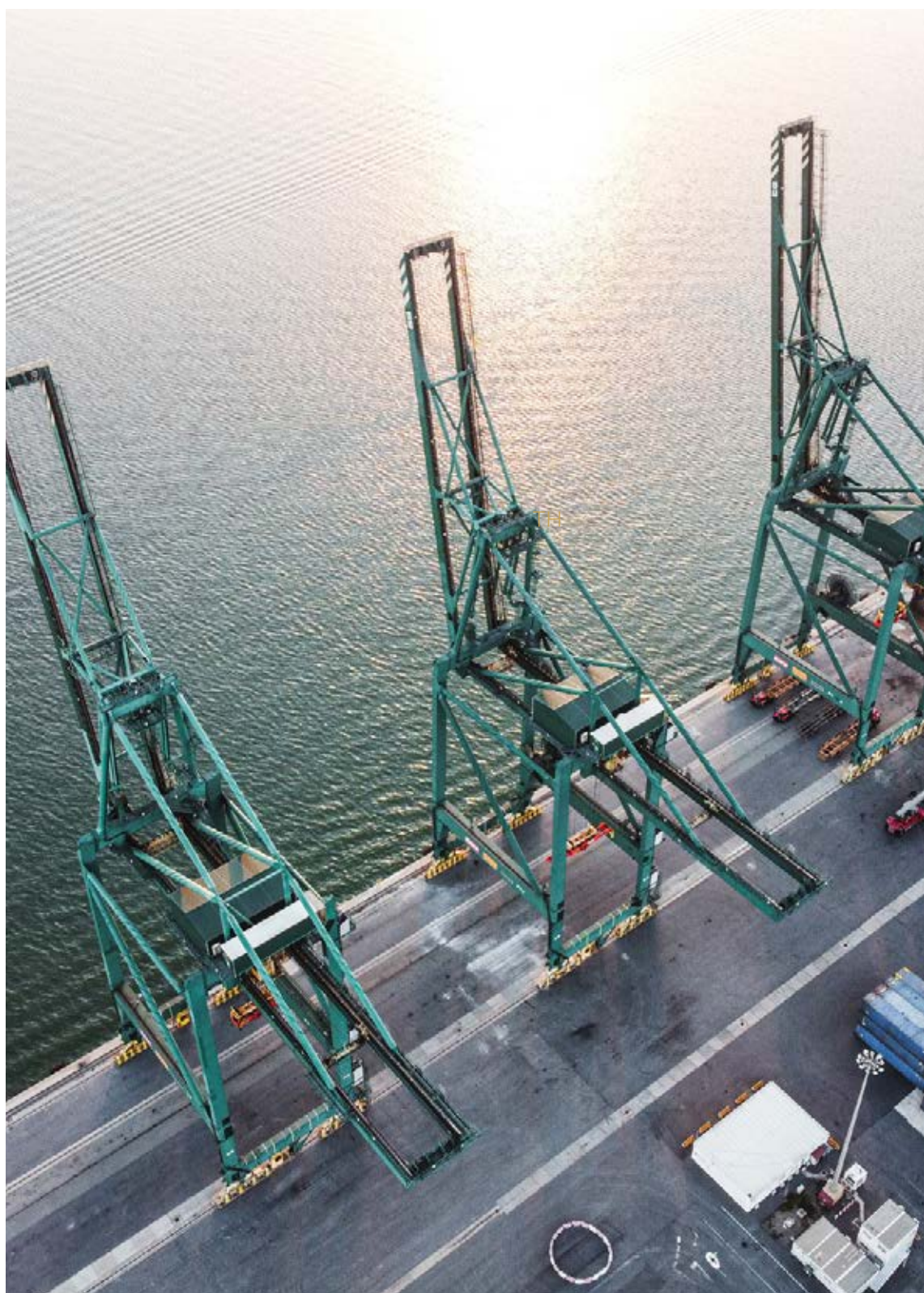
GÄVLE FIRST OUT TO
HANDLE
THE LARGEST
WINDMILL BLADES

34

AGEPOR
ORGANIZES
MEETING WITH
PORTUGUESE
SHIPPING AGENTS
TO PROMOTE THE
YILPORT LISCONT
PROJECT

48

MINING SECTOR
CHOOSE PUERTO
BOLIVAR
AS THE GATEWAY TO
ECUADOR



#Yilport #11thbiggest #globalcontainerterminaloperator



YOUR **GLOCAL** SOLUTION PARTNER

YILDIRIM Group has grown to become a global force based in Istanbul, Turkey, active in 9 industries with operations in 51 countries on 5 continents, employing more than 13,000 people.



The Key to Success is in Our DNA

www.yildirimgroup.com

index

outlook

8 Quarterly Container Shipping Industry Outlook
Hasan ÇİFTÇİ

holding

4 YILPORT IBERIA Greet New Cranes

turkey

12 TURKEY MED EXPRESS
to Call Gebze and Gempport

16 Container Volume Record at Gempport

nordic

26 YILPORT Gävle Container Terminal
Under Construction

28 Gävle First Out to Handle
the Largest Windmill Blades

iberia

33 Corporate Affairs Regional GM Diogo Vaz
Marecos Attended “Decarbonization in Ports”
Conference at Porto Maritime Week

34 AGEPOR Organizes Meeting with Portu-
guese Shipping Agents to Promote the
YILPORT Liscont Project

mediterranean

38 Breathtaking General Cargo Operations at
YILPORT Taranto SCCT

latam

48 Mining Sector Choose Puerto Bolivar
as The Gateway to Ecuador

CONNECTION MASTHEAD

Executive Editor Aytuğ PİRİMOĞLU	Designers Murat HELVACI Sadık BULUT Ece YAVUZ	Guest Editors Kemal AYSEL
Editor-in-Chief Ece YAVUZ		





Looking Ahead
to the Future of Huelva

Ground Breaking Ceremony at Huelva

YILPORT IBERIA Greets New Cranes

YILPORT Huelva received 3 STS cranes which will significantly increase the capacity of the Terminal and improve the efficiency of the port operations. YILPORT Huelva aims to be a reference not only in Andalusia but in the South of the Iberian Peninsula looking at the Atlantic and the Mediterranean, in line with YILPORT Holding's investment in the Terminal.

Port Authority and YILPORT Huelva gathered over 130 people from YILPORT, local authorities, shipping lines, shipping agents, freight forwarder representatives, shippers, local industrial and commercial associations at the inauguration ceremony of the new cranes on 19 October 2021.



Above
Ms. María del Pilar Miranda Plata
President PORT of HUELVA

Ms. María del Pilar Miranda Plata, President of Port of Huelva appreciated the efficiency in the management, loyalty, and hard work. She thanked everyone who is involved, namely the Port Community. She also emphasized her gratitude on good practices that led making Port of Huelva a sustainable port. Port of Huelva is the second port that has grown the most in the past year in general cargo and the third port that

Ms. Plata, President of Port of Huelva appreciated the efficiency in the management, loyalty, and hard work.

has grown the most in Spain despite the pandemic, added by mentioning the importance of digital transformation in developing projects in sustainability, efficiency, and management. She ended her remarks congratulating Mr. Robert Yuksel YILDIRIM.

Ms. Bella Verano, Regional Government Delegate thanked the technical team on their tireless work. "Today, we are going to inaugurate three cranes that will increase the operational capacity of the container terminal of the dock." She thanked YILPORT Holding and CEO of the company Mr. YILDIRIM. She also stated that they, as the Andalusian Government, are clear that Andalusia must be the logistics platform for southern Europe. And for this drawing up



Left
Ms. Bella Verano,
Regional
Government
Delegate

Ms. Velano stated that as the Andalusian Government they are clear that Andalusia has to be the logistics platform for southern Europe.

a strategy based on enhancing inter-modality and generating infrastructures that promote the effectiveness of the different modes of transport is essential. Thus, for the correct development of logistics activities, she stated that there must be good planning that defines the priorities and priorities when executing projects and initiatives that must, of course, have sustainability as a determining factor.

Mr. Robert Yuksel Yildirim Chairman YILPORT Holding made the following remarks in his speech at the event: “We are happy to be invited here, and honored to build the future of Huelva Port and Huelva. I was here five years ago when I acquired several ports from Mota Engil. Huelva Port was one of them and I had never been in Huelva in my life. So that was my first visit. I was very much impressed how well established the port was. Unfortunately, the port was not getting enough attention and it was not supported enough by the business world. When I saw the situation, I believed in the future of Huelva. This city and hinterland have a lot of potential to make the port of Huelva go forward and get bigger. For that reason, we have been working on what we can do for Huelva’s future. Port Authority president Mrs. Maria del Pilar came to Istanbul, and we had a very constructive meeting on what to do for Huelva. They asked for two additional STS cranes, but today we brought three instead of two. This is because we want to boost port productivity and efficiency in order to attract business. This is just the start of our first investment phase after I acquired the container terminal. We believe in the future of this container terminal. Maria del Pilar and Ignacio Álvarez-Ossorio showed us their vision on how to expand the port. We show great interest. We said that we want to be a part of this growth. For that reason, now the port is preparing for phase 2 of investments, to make the terminal competitive against Valencia, Barcelona, Al Jazeera, and even Tangier Med. Huelva Port is ranked number 5 in Spain, but we believe we can make it better. We cannot do this alone. We can do it together. Today we all got together for the future of Huelva. I can commit and I can promise today that I will do my part to make the port successful for the next decade. As we all know, the pandemic made a big change in our lives and in our business. We all adapted to the new normal. Mrs. Del Pilar said that this port made great improvement in July and August, and reached historical record breaking volumes. So that shows us that we can do it together. That is why YILPORT’s ‘can-do attitude’ will play a great role here to make the

community successful. We can tell the government of Spain here that no matter what happens, we are here. We are not going away. We will stay here, and work for Spain. We will get it done. We really want to get to the second investment phase of this port. Because we know what the future needs. We studied our competitors in Spain, and the hinterland on how to compete with them. We can build a state-of-the-art terminal, fully automated, make the efficiency great and we can attract all the global top container liners to call the Huelva port soon. We



Above
Robert Yuksel YILDIRIM
President and CEO
YILDIRIM Group & YILPORT Holding

want to work together with the Port Authority and create a successful future for the community. I would like to thank you again for trusting us, being with us and we will build the future together.”



Above
Mr. Ignacio Álvarez-Ossorio Ramos, Director
PORT of HUELVA

Mr. Ignacio Álvarez-Ossorio Ramos, Director PORT of HUELVA, emphasized the critical geographical position of Europe connecting Europe in the Atlantic. He also stated the intermodality of the terminal by container, ro-ro operations and railway network. “We need to use this strategic advantage to develop our future strategy in container. The most important strategy is the diversification of the traffic. The important strategy of the port intermodality is to give port a global role in the logistics by extending network in the hinterland and regular connection in all type of traffic mainly Ro-Ro and container. It also high-capacity road terminal, border inspection point and other services such as Liquid and bunkering and general cargo, reefer cargo that we are building. We have opportunity to develop all in one area in this intermodal platform.”



Left
Mr. Pedro Fernández Peñalver,
Government Delegate in Spain for Andalusia

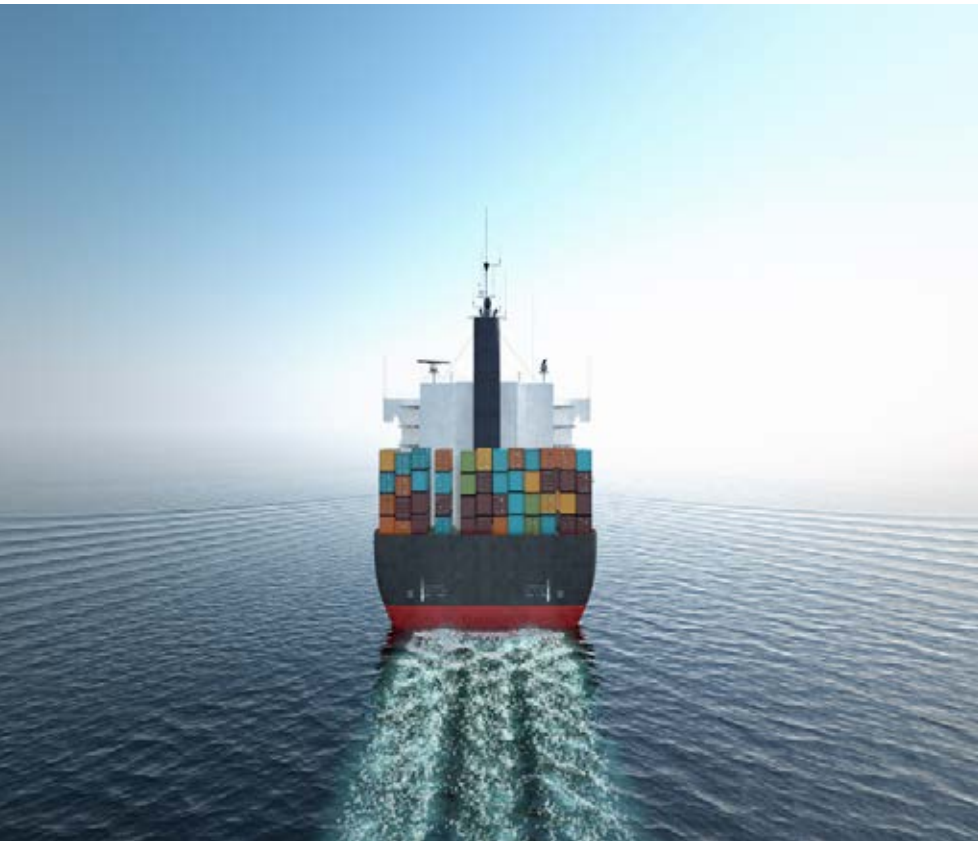
Mr. Pedro Fernández Peñalver, Government Delegate in Spain for Andalusia highlighted the importance of the synergy and the activities have been carried out so far. As stating the importance of this development for Huelva community for the investments in gross domestic products of Andalusia. Mr. Pedro Fernández Peñalver thanked for the good investments that has been preparing the land for the future and congratulated all the parties involved.

The Super Post Panamax cranes will enable the operation of vessels with a range of 20 rows of containers on deck and the ability to operate twin-lift (maximum 65 metric tons) paving the foundations to attend main Shipping Lines and their 10.000 TEU vessels in their gateway but also transshipment businesses.

YILPORT Huelva, in cooperation and total alignment with Huelva Port Authority strategy, is ready to welcome and serve all the cargoes in its Hinterland, handled by an experienced Team, and supported in excellent infrastructure and connectivity.

Below
Keynote Speakers
at Inaguration Ceremony







Hasan ÇİFTÇİ
YILPORT Holding
Sales & Marketing Director

“Global port throughput is expected to grow 8.2 % in 2021 despite the supply chain disruptions.”

Quarterly Container Shipping Industry Outlook

According to Drewry; Global port throughput was expected to increase by 8.2 % to 862 million TEU in 2021 and a 5,2 % growth in 2022 to 907 million TEU. The Largest growth is expected in North America by 15.5 %, Latin America is followed by 10.2 %, 7.3 % in Asia and 6.5 % in Europe.

The rise in freight rates continues. It is stronger than expected in Q3. The Container Shipping industry is living its Golden Year with record profits and according to many experts, it is expected to continue until 2023.

The higher freight rates on the main east-west lanes attracted capacities to be moved from smaller trade to the main ones. Adding new container ships to already congested trade lanes caused more waiting times at ports as the hinterland of the terminals don't support high demand because of limited truck drivers, limited warehouse capacity.

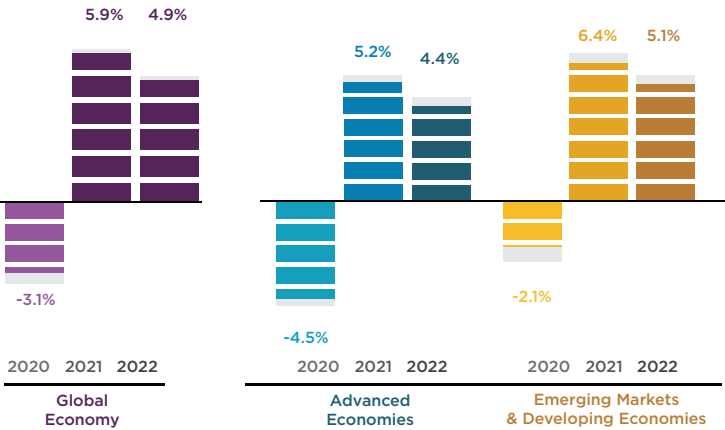
The increasing costs in the container shipping sector cause further challenges for traders and supply chain managers. UNCTAD's analysis predicts that global import price levels will increase on average by 11% because of the freight rate increases. If this continues, the Global Consumer Prices is expected to increase as well.

Latest Developments In Containership Fleet
Despite an 8.2 % growth expectation on World Container throughputs, fleet growth is expected to be 4.4 % in 2021, far below the demand. There are currently 5.489 ships with a total capacity of 24,810M TEU, the orderbooks total capacity is 6,728M TEU which is around 20.4 % of the current fleet capacity.

Overview Of Global Economy
The global economy is projected to grow 5.9 % in 2021 and 4.9 % in 2022 (0.1 % point lower for 2021 than in the July 2021 World Economic Outlook (WEO) Update).

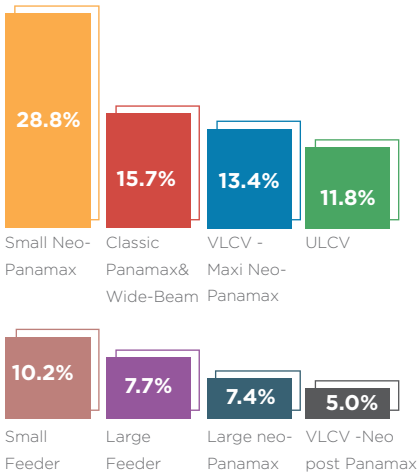
In advanced economies, growth prospects for 2021 are revised down by to 5.2% compared to the July forecast, the largely reflecting downgrades to the United States which is 1% (due to large inventory drawdowns in the second quarter, in part reflecting supply disruptions, and softening consumption in the third quarter). Emerging market and developing economies: The forecast for the group is marked up slightly compared to the July 2021 WEO Update, reflecting upgrades across most regions. China's prospects for 2021 are marked down to 8% with a drop of 0.1%. The growth forecast for the low-income developing country group is marked down 0.6 % points relative to July with the continuing slow rollout of vaccines as the main factor weighing on the recovery.

WORLD ECONOMIC OUTLOOK GROWTH EXPECTATIONS (Graph 1)



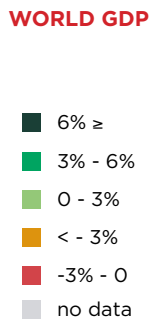
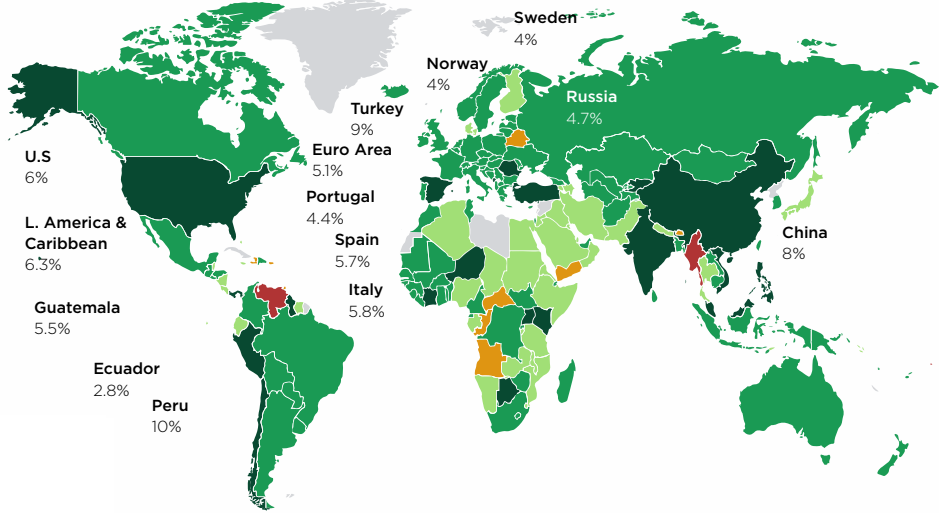
Source: WEO January 2021

WORLD CONTAINERSHIP FLEET by Size, April 2021 (Graph 2)



Source: Drewry

WORLD GDP



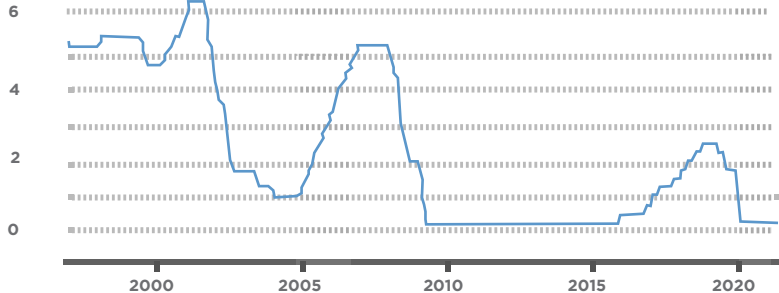
Source: Federal Bank

US FED FUNDS RATE

Fed funds keep the rates at 0-0.25%

The Federal Reserve announced that it is keeping interest rates steady following its Sept. 21-22 meeting, leaving the federal funds rate at a range of 0 to 0.25%.

It follows the Fed's decision to hold rates near zero until the economy has fully weathered the effects of the coronavirus.



Source: Federal Bank

FED, keeps rates at 0-0.25%

2020 Global Growth (F) 5.9%

2021 Glob-al Growth (F) 4.9%

Source: US FED FUNDS RATE

Global growth projected as 5.9 percent in 2021 at the October 2021 World Economic Outlook (WEO) forecast 0.1 percentage point lower for 2021 than in the July 2021 World Economic Outlook (WEO) Update

YILPORT TURKEY

REGIONAL INFORMATION

Located among Marmara region of Turkey, YILPORT’s multipurpose terminals offer the best solutions, located at different coasts in the hearts of industrial zones. The terminals are closely connected to main highways offering easy access.

YILPORT Gebze, Gempport, Rotaport and Solventaş terminals are utilized with bonded and non-bonded areas, warehouses and supported by end-to-end logistic services.





TURKEY MED EXPRESS to Call Gebze and Gempport

YILPORT Holding has received a new service from CMA CGM. This new Short Sea Med service which is the fastest ever sustainable maritime bridge between Western Turkey & Adriatic: TMX 3 – TURKEY MED EXPRESS-3 started on July 7th.

This service is a consistent sustainable alternative to traditional truck flows aiming at optimizing your supply chain dynamics. Also, with this new logistic solution, you can optimize you transportation lead-time, your costs and your frequency.

You can find 'Short Sea Med's route below;

TMX 3 – TURKEY MED EXPRESS-3 SERVICE PARTICULARS

Fleet: 2 vessels x 850 TEUS nominal capacity
Rotation: Ambarlı / Gebze (YILPORT) / Gemlik (GEMPORT) / Trieste / Koper / Venice / Malta / Ambarlı

Frequency: Weekly

Scan QR code for more information related to liner's new service;



Region Turkey Sales & Marketing Head Attended Round Table Discussion

Black and Caspian Sea Transport Forum 2021 took place in İstanbul, on 21, September. YILPORT Holding Turkey Region Sales and Marketing Director Ertan Ocak, joined forum as a speaker on the round table discussion.

Freight market conditions, the impact of western sanctions on shipping and logistics, cargoes containerization, optimization of container logistics, container collapse and its impact on the region, perspectives of shipbuilding in the region and Black Sea shipping risks, recent trends discussed at the round table.



366 Meters Length MSC Topaz Berthed at Gebze Terminal



YILPORT Gebze Terminal hosted the 366-meter-long vessel MSC Topaz on September 11. The Tiger service type vessel which berthed at YILPORT Gebze to load Livex cargoes, was recorded as the largest vessel docking at the YILPORT Gebze terminal.

Master's Degree Students Visited Gempport



YILPORT Gempport hosted 70 Master's Degree students from The Russian Presidential Academy of National Economy and Public Administrative (RANEPA) on 15, September. RANEPA Master's Degree students joined the YILPORT Gemlik Terminal tour and were informed about YILDIRIM Group and YILPORT Holding.

Vezirhan Cement Highest Cement Loading



Gemlik Region’s one of the biggest export companies “Vezirhan Cement” loaded their clinker bulk cargo from YILPORT Gempport’s unbonded depot to GC vessel, around 41.000 tons just in 3 days operation time. All cargo was handled by YILPORT Gempport’s equipment and manpower smoothly in a short time. YILPORT Gempport has the largest capacity and capability to supply services to cement industry customers and support their exports.

Cimsa’s Biggest Loading of This Year



M/V Franz Schulte has been hosted by YILPORT Gempport shortly but with good memories. 12.000 tons of big bag has been loaded with high performance. YILPORT Gempport loaded the cargo at a 5.000 tons rate per day that has been carried from multiple warehouses close to the terminal by Cimsa trucks. This vessel operation again proved that YILPORT Gempport supports its customers with safe, fast and efficient big bag goods handling for general cargo vessels.

Growing together with Carbones GMBH in Turkey Terminals

YILPORT Holding Terminals have been providing utmost services and one-stop shopping availability to Austrian based trading company “Carbonex GMBH”. Carbonex company providing substantial turnover YILPORT Holding Terminals with general cargo vessel discharge and bulk cargo storage operations. We are glad to have our cooperation is growing with firm steps and honoured to be a part of the Turkish steel industrys’ rising value in the Marmara Region day by day.



VGM Weight Bridge Service Expanded at Gempport

YILPORT Gempport established an additional weighbridge to its bonded CFS yard to provide fast and more efficient VGM weighing operations. This newly established additional weighbridge enables faster registration to the ministry’s VGM system, which supports reducing its customers’ export declaration time to catch concerned vessel cut-offs. YILPORT Gempport is in the position of one unique terminal with 11 VGM weighbridges.

Container Volume Record

The maximum container volume in YILPORT Gemlik handled in monthly basis was 62.147 TEUs from the day of terminal established. In August, YILPORT Gemlik handled 64.148 TEUs and set a new record!

Also YILPORT Gemlik, handled the highest number of container vessels in its history, with 90 container vessels operated in August and set a second record.



Young Talents on the Stage at Gempport



Like every year, Sea and Port Management Program Advisory Board Meeting is held at Bursa Gemlik Asim Kocabıyık Vocational School, which trains candidates with high potential for the port industry.

In this context, the meeting was held with the participation of the regional ports' operations managers and Gemlik Port President Asim Sulu on Monday, November 8th, 2021. Gempport Operations Manager Ali Vurgunlu and Gempport Human Resources Senior Specialist Çağrı Özbek

attended to the meeting on behalf of YILPORT Gempport. Under the supervision of our colleagues, information about the Marine and Port Management Program, evaluation of the importance of Workplace Training Courses, internships for students, technical trips, social activities, and expectations from graduates were discussed.

YILPORT will continue to increase the awareness of young talents who will take place in the industry, and to support their career development processes.

Turkey's Leading Liquid Terminal



YILPORT Gebze Railway & Common Road Projects are on the Right Track

YILPORT Gebze terminal has been dealing with several project simultaneously as well as railway and common road projects. on the contrary to increase operational efficiency and cope up with increasing capacity to conduct safer operations.

In railway project, concrete breaking, excavation, and jet grouting works recently completed. First rail lane concrete work already completed, and rail line1 and line 2 routes are ready for lean concrete. Gebze continues the project aligned with the timeline; it's expected to be completed by end of December.

The common road project which started with Çolakoğlu Metallurgy is moving forward to decrease the traffic density and conduct safer operations. YILPORT Gebze and Çolakoğlu Metallurgy will have dedicated truck parking areas. Within the scope of the project, Gebze will have new lanes equipped with new OCR portal, Kiosks and LPR systems.

Ground and retaining wall works are ongoing, expected timeline for these tasks to be completed in June/July 2022, the overall project completion time is September 2022.

Based on the traffic projection for the next ten years, the traffic density on the connection road is expected to be over 3000 vehicles for two facilities in one day. The project is crucial to optimize the current access road and as the future development of the facilities. The estimated plan for project completion is 12 months.



YILPORT

Rotaport General Cargo Operation

YILPORT Rotaport general cargo terminal provides service to bulk and break-bulk cargo owners with its easy connection to the main roads. The terminal where it is located to the hearth of the poultry industry constantly develops its service quality by making state-of-the-art technological investments with its fully committed to the environment.

The terminal is able to operate more than 90,000 gross ton vessels. The conveyor system built between cranes and silos offers a daily discharge rate of 15,000 tons. Having the deepest berth and largest vessel capacity operation license at the region, YILPORT Rotaport provides highest productivity at the loading operations by far from the competition with a figure of 300 tons per hour. 10.000 m2 New Warehouse With the investments made, the terminal commissioned the warehouse and started its operations with 2,500 square meters closed and 7.500 square meters open area.

YILPORT Rotaport continues to break its record each year with an increasing momentum in the operations. 27.000 tons of nickel (bulk) was loaded on Fe-Ni Maden's ship named TW HAMBURG. The related ship was recorded as the largest ship hosted in the port in the history of Rotaport (93,229 DWT). The discharging operation of 36,896 tons of Vezirhan Cement company's cargo was carried out (FU XING HAI). Terminal had an agreement for 75,000 tons of corn until the end of the year. The discharging operation of 20,141 tons of coil sheet load of Yıldız Demir Celik was carried out. The discharge operation of 14,412 tons of aluminium cargo of Glencore has been completed. As a new customer, we started to work with Bek Tarım. The discharge and storage operations of 13,200 tons of wheat that came to the port with 4 different ships of the company have been completed. The discharge operation of 8,111 tons of Sibelco company's cargo was carried out.



YILPORT NORDIC

REGIONAL INFORMATION

Located among Scandinavia region, YILPORT’s multi-purpose terminals offer the best solutions, at different coasts of Norway and Sweden in the hearts of industrial zones. The terminals are closely connected to main high-ways offering easy access.

YILPORT Oslo, YILPORT Gävle and Stockholm Nord terminals are utilized with bonded and non-bonded areas, warehouses and supported by end-to-end logistic services.



YILPORT NORDIC

Regional Throughputs
Third Quarter 2021



Container
260,054
TEUs



General Cargo
862,709
TON



Ro-Ro
16,104
CEUs



YILPORT Holding
NORDIC Region
Sales and Marketing
Responsibles

Head Office Contact:
Mr. Enes GENÇAL
enes.gencal@yilport.com
sm@yilport.com

Region Contact:
Mr. Håkan BERGSTOM
hakan.bergstom@yilport.com



YILPORT Gävle Container Terminal Under Construction

YILPORT Gävle Container Terminal expands and the project is nearing the end stages of construction. Since the construction of the quay was completed in early 2021, work has continued with infrastructure and new cranes being implemented.

YILPORT Nordic and Port of Gävle together have invested over one billion SEK to expand the container terminal in Gävle to meet the increase in demand for container transport. With the expansion, the terminal capacity increases from 250,000 TEU to 600,00 TEU per year. The container terminal is now nearing its final stages of construction.

Three Super Post Panamax cranes arrived in June of 2021 and were handed over to YILPORT in early September. Training for operators is expected to be completed in the middle of November. The six e-RTG cranes that arrived in February of 2021, SATs are expected to be completed in early October. The second phase of commissioning for remote or automation functions will start directly after. All cranes and machines in the new terminal area will be electric, reducing carbon dioxide emissions while keeping noise levels to a minimum.

For all the electric equipment to function, substations have been built during summer. Two out of three substations are completed and powered up. They have been powering the RTG testing, while the third substation will be completed in late October. Busbars for the RTGs were installed and completed during August and powered up a few weeks later.

The new terminal area will be equipped with a food inspection facility, needed for YILPORT Gävle Container Terminal to handle import containers with food. The facility construction will start in the middle of October. To store reefer containers, reefer racks have been installed and the mechanical installation has been finished. Electrical installation will commence in October and is expected to be completed during two weeks.

A lot of infrastructure construction is needed for the new terminal area to be ready for use. Most of the infrastructure, such as concrete, asphalt, and electrical, will be completed and handed over by late October. If winter in Gävle is mild this year, the remaining areas will be handed over by December.

- With this investment, we take decisive steps towards fantastic opportunities to further strengthen our position as the East Coast's largest—and one of Sweden's most important container ports. As the size of vessels increases, we are now well prepared to meet the needs of the shipping companies, says Fredrik Rönnqvist, Terminal Director at Yilport Gävle Container Terminal.



Gävle First Out to Handle the Largest Windmill Blades

YILPORT Gävle General Cargos successes with windmill handling gives more and more projects. Now, YILPORT Gävle has handled the longest windmill blades to date.

As one of the first ports in Sweden, YILPORT Gävle handled a ship loaded with wind power blades measuring 84 meters. The record-length blades belong to windmills that usually are installed offshore, but now will be installed on-shore in Sweden.

- It is very exciting that we get the opportunity to be one of the first ports to handle these blades. It is proof that we have done a good job previously and have built a good relationship with the customer, says Jörgen Flank, Terminal Director at YILPORT Gävle.

Below, YILPORT Gävle General Cargo Terminal



YILPORT Oslo Now Has a Sustainable Terminal Building

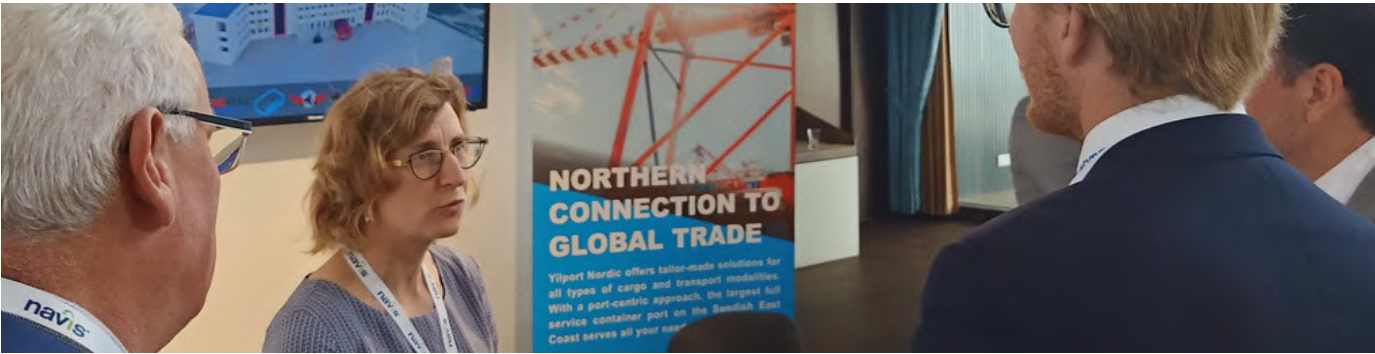
In collaboration with the Port of Oslo, YILPORT Oslo has built a new terminal building. Together, the parts are taking important steps towards meeting the sustainability goals of being a zero emissions terminal.

The first offices moved in during September, with more office-functions to be moved to the new building as time goes on.

The new facility is equipped with 136m2 solar cells on its roof and 120m2 on the facade. All solar cell panels are expected to produce a total of 29,000 kWh per year. The building is installed with full LED technology for energy efficiency and provides 8 eRangeDUO 14 kWh electric car chargers.

The new terminal building will be used as YILPORT Oslo's main office. Outside of offices, the building is equipped with a gym for employees to use outside of working hours, changing rooms, and conference rooms.

YILPORT Nordic at Baltic Ports and Shipping Conference



In mid-September, YILPORT Nordic participated in the 5th Baltic Ports and Shipping event in Lübeck, Germany. Baltic Ports and Shipping is the biggest annual conference regarding ports, shipping, and transport logistics in the Baltic region.

The two days in person-conference featured 25 world class conference speakers addressing issues, challenges, solutions and innovations in port operations, shipping, supply chain and logistic strategies.

YILPORT Nordic General Manager Eryn Dinyovszky attended the event together with the Nordic sales team. Eryn Dinyovszky was one of the main speakers and gave a speech on the topic "Planning Development Projects Aimed at Expanding Port Capacity".

The focus of the event was to start discussions between ports, customers and suppliers for future collaborations and some business development opportunities. At the same time, YILPORT's name and brand are gaining a stronger foothold in the Baltic Region. During the presentations, some speakers highlighted YILPORT as an example of successful customer implementation.

A lot of interest were shown in the exhibition area for YILPORT. Lots of people lined up to speak with YILPORT attendees about the developments in the Nordics. In the exhibition area, many good conversations were held with customers and other ports looking for new connections to Sweden and Oslo.

YILPORT IBERIA

REGIONAL INFORMATION

Located among the Iberian Peninsula, YILPORT’s multipurpose terminals offer the best solutions, at different coasts of Portugal and Spain in the hearts of industrial zones. The terminals are closely connected to main highways offering easy access.

YILPORT Leixões, Liscont, Sotagus, Setubal, Tersado, Figueira da Foz, Aveiro, Huelva and Ferrol terminals are utilized with bonded and non-bonded areas, warehouses and supported by end-to-end logistic services.



YILPORT IBERIA

Regional Throughputs
Third Quarter 2021



Container
593,330
TEUs



General Cargo
1.343,081
TON



Ro-Ro
20,588
CEUs

YILPORT Holding
IBERIA Region Sales
and Marketing
Responsibles

Head Office Contact:
Ms. Mine ÇALIŞKAN
mine.caliskan@yilport.com
sm@yilport.com

Region Contact:
Ms. Sandra BORRALHINHO
sandra.borralhinho@yilport.com





YILPORT Setubal Provides Shared Scanner and Phytosanitary Inspection Services

After some months developing the project in cooperation with Setubal Port Authority, Customs House and TERSADO, YILPORT Setubal is now able to provide to the Customers scanner and phytosanitary inspection services in the Border Inspection Post.

With optimized investment and taking advantage of common area and equipment in the Port, both operators YILPORT Setubal and TERSADO, can grant the required services to export and import cargoes (namely fruits and vegetables refrigerated in Reefer containers), expanding the terminal attractiveness. YILPORT Setubal developed to be now a full-service terminal.



YILPORT Huelva Increasing Equipment Quantity



YILPORT Huelva continues its investment in the context of expansion plans. The terminal recently has five new reach stackers to be used at Yard, Rail Train Area and Ro-Ro operations.

The ECO system, with automatic shutdown and low consumption levels, exceptional safety accessories or the automatic fire-fighting system make this model a state-of-the-art machine.

This investment, together with the arrival in 2 weeks of 4 new Terminal Trucks and the 3 new Super Post Panamax cranes, is part of an investment plan that has been carried out at the Terminal to position the Port of Huelva as a benchmark in the sector, both in the Atlantic as in the Mediterranean: corridors of the Iberian Peninsula, given its geographical position and its intermodal connectivity.

AGEPOR Organizes Meeting with Portuguese Shipping Agents to Promote the YILPORT Liscont Project



In cooperation with YILPORT Liscont, AGEPOR - Association of Shipping Agents of Portugal with the support of the board of APAT - Portuguese Freight Forwarders Association, both key stakeholders in the Lisbon Port Community, organized a meeting with local Shipping Agents.

The message and open dialogue with the Shipping Agents that attended (Hapag-Lloyd, Orey Shipping, Navex, Pinto Basto and Burmester & Stuve) were centred in the firm steps taken

in the last 18 months by YILPORT as a game-changer in the historic situation of the Lisbon Port, not only in the labour context by hiring and sustainably training since April 2020 over 70 new stevedores, but also adjusting to a new operation format that reduces the number of stevedores required for non-stevedoring functions and investing in new TOS, already implemented beginning of this year, new yard equipment (6 RTG's already received) and new STS cranes, just to name a few items.

The guarantee of current available capacity and service level to work more vessels as per Shipping Lines requirements were reinforced by YILPORT Liscont Board and Operational Management. A new meeting to provide updates and gather contributions is planned for September, following the path of dynamic communication between all interested stakeholders in the growth of Lisbon Port.



Corporate Affairs Regional GM Diogo Vaz Marecos Attended “Decarbonization in Ports” Conference at Porto Maritime Week



YILPORT Iberia Regional General Manager, Corporate Affairs Diogo Vaz Marecos represented YILPORT Holding at the conference. Diogo Vaz Marecos highlighted the investments that YILPORT is already carrying out both in the Port of Leixões, in the amount of 43.4 million Euros, also in the Port of Lisbon, in the amount of 114 million Euros.

Additionally, Diogo Vaz Marecos revealed the impact of the new port equipment, and the electrification of the existing one, will contribute to the greater environmental sustainability of YILPORT’s terminals in Portugal.

YILPORT Holding’s concern regarding the sustainability of the port

business in the region of Iberia was also highlighted. As YILPORT, we have succeeded not only in reducing our environmental footprint but also in modernizing the port infrastructure.

YILPORT & Transitex Attended Valencia Ports & Shipping Week



YILPORT Iberia and Transitex attended to Valencia Ports and Shipping Week event at Westin Valencia, Spain Between 5-7 of October 2021.

Regional GM Mr. Diogo CASTRO and Transitex Sales Executive Sara LIMA represented companies. YILPORT Holding CMO Erhan ÇILOĞLU attended the conference where Chief Terminal & Business Development Officer Mr.Rafael Saphina attended as a speaker.

By having a chance to extend the network of the company, YILPORT’s presence in region Iberia is taking attention of the hinterland after the investments with the ongoing projects so far.

GAME CHANGER

in Port & Container Terminal Management & Operations



in 22 Marine and 6 Inland Terminals

- TURKEY:** GEBZE | DILOVASI- SOLVENTAŞ | GEMLIK- GEMPORT | YARIMCA- ROTAPORT
- MALTA:** MALTA FREEPORT **ITALY:** TARANTO **SWEDEN:** GÄVLE | STOCKHOLM NORD
- NORWAY:** OSLO **SPAIN:** FERROL | HUELVA **PERU:** PAITA **ECUADOR:** PUERTO BOLÍVAR **GUATEMALA:** QUETZAL
- PORTUGAL:** LISCONT | FIGUERA DA FOZ | LEIXÕES | SOCARPOR | SADOPT | TERSADO | SOTAGUS



YILPORT MEDITERRANEAN

REGIONAL INFORMATION

Located in Italy and Malta YILPORT's Mediterranean terminals offers hubs-home terminals for container, general - bulk and ro-ro operations, and provide easy access to roads and logistics services.

The Multipurpose Pier of the port of Taranto San Cataldo Container terminal, located in the heart of the Mediterranean basin, is particularly strategic as a natural gateway for sea traffic from/to Central Europe and the Far East

and the developing economies of the Near and Middle East and North Africa.

Malta Freeport offers extensive worldwide regular network connections, high performance levels, cost effectiveness, ease of access to markets with minimal diversion distance, easy port accessibility, safe maneuverability of vessels and all-year favorable weather conditions.



YILPORT MEDITERRANEAN
Regional Throughputs
First Half 2021



Container
1.642,899



**Malta Freeport Terminal**
Marketing Responsibles
marketing@maltafreeport.com.mt
www.maltafreeport.mt

YILPORT Taranto San Cataldo Container Terminal
Head Office Contact:
Mr. Enes GENCAL
enes.gencal@yilport.com
sm@yilport.com
Taranto Local Sales
Francesco Tota
francesco.tota@yilport.com
sm@yilport.com



Breathtaking General Cargo Operations at YILPORT Taranto

In the last months of 2021, YILPORT Taranto San Cataldo Container Terminal started the logistics operations of components of the first offshore wind farm in the Mediterranean.

In August, the first shipment by vessel berthed in Taranto and delivered ten monopiles of the tower foundations. In September, the second batch of the components that includes platforms and ladders were unloaded. At the beginning of October, in advance of the scheduled times, the

unloading operations of the remaining components (blades, nacelles, tower sections, hubs and others) were completed. In total, over 10,000 tons were discharged and moved on a dedicated storage area of 50,000 square meters.

As this extended operation series, the terminal hosted a Jack-Up Vessel, berthed in the same period that will carry components for the installation of the offshore wind farm.

In this last month, on the other side, the support of SCCT is being carried out for the assembly activities of the various components; during December, the assembly operations at sea will start and to complete in the first months of 2022.

For the Taranto Terminal, it is the first important operation of project cargo with activities of load-off, load-on and handling of more than 200 components with high value.

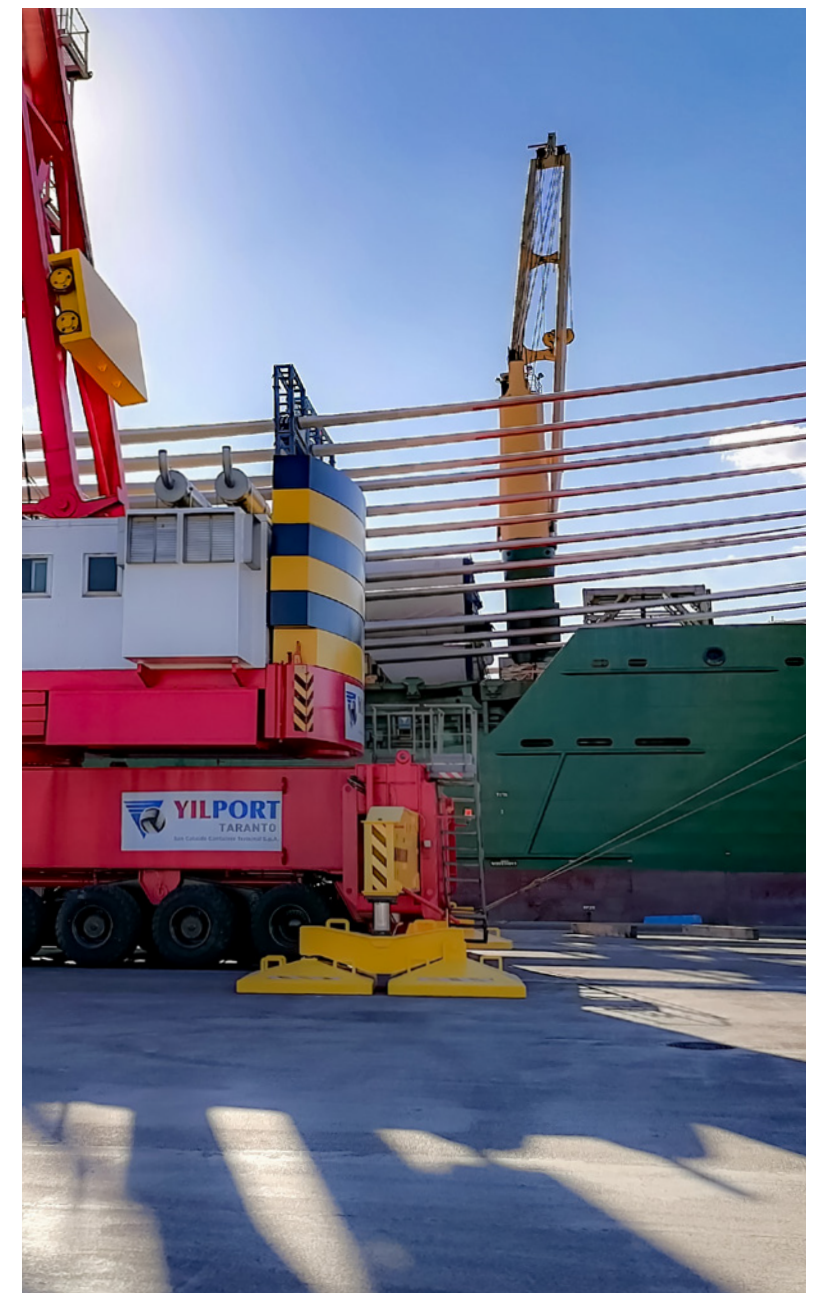
YILPORT Taranto is happy to see the increased traffic to/from the terminal by meeting as an outcome of increased service range and the synergy created with local companies and institutions.

The recent logistic activities relating to the offshore wind farm have been established close collaborations with other port operators and in other companies have also been involved. The vision of the YILPORT Taranto San Cataldo Container Terminal offers diversified services container, breakbulk, special and project cargo services. Thus terminal recalls the handling of an offshore platform, the unloading, storage and handling of

dedicated shipments of pipes, the two-year agreement of breakbulk order of generators for on-shore wind farms.

YILPORT Taranto SCCT operates with 5 STS, 11 RMG and 1 Mobile harbour crane. By the beginning of the upcoming months, the terminal will extend services with railway cargo from/to internal railway platform. Theses shunting service will connect the national and international railway network with five railway tracks for loading and unloading containers. Two locomotives were already delivered for the shunting operations of the cargo trains to/from the public rail platform within this scope.

YILPORT Taranto can count on the preparation of the workers and the logistic and infrastructural system available. The more an infrastructural system available to the Apulian economy and more generally to all of Southern Italy, having "rediscovered" its centrality as a strategic hub in the heart of the Mediterranean.



YILPORT Attended Genoa Shipping Week



“Genoa Shipping Week, born from the partnership between Assagenti and Clickutility Team, is a biennial event that brings together port, maritime and logistics operators from all over the world.” Genoa Shipping Week took place in Genoa, Italy. YILPORT Holding Chief Operations Officer Ian JAMES, Sales and Marketing Director Hasan ÇİFTÇİ and YILPORT Taranto SCCT General Manager Raffaella DEL PRETE attended the event

Latest Terminal of YILPORT Portfolio, YILPORT Taranto San Cataldo Container Terminal Started its Operations

Taranto Port Days are Back



YILPORT Holding attended to “Taranto Port Days” event organized by the Port Authority and held from October 01st to October 04th. This event’s main mission is to increase the reputation of the Ports amongst the local community.

YILPORT Taranto Team organized special events, port facilities visits, workshops, music, and foods for the local community. In addition, Ports’ company stands were opened to all the visitors of the town and neighbourhoods. Special attention was dedicated to schools with special tour and presentations. Taranto hosted several students who have been guided inside the Terminal by our colleagues. YILPORT Taranto was represented at the event to show its growing potential every day.



Malta Freeport Welcomes LNG Powered Fleet of CMA CGM



During this quarter Malta Freeport welcomed the 8th and 9th newly launched vessels namely CMA CGM Trocadero and CMA CGM Sorbonne. CMA CGM Sorbonne is the latest in a series of nine LNG 23,000 TEU super containerhips operating on the prestigious French Asia Line Service (FAL 1) both making their maiden call in Malta. This impressive new fleet emits up to 20 per cent less CO₂ when compared with conventional fuel-powered systems, allowing for a 99% reduction in sulphur dioxide emissions, a 91% reduction in fine particles and a 92% reduction in nitrogen dioxide emissions. Such vessels are handled efficiently and with no constraints at Malta Freeport thanks to the strategic decision taken to invest in six megamax quay cranes, which have the capability to stack rows 11- containers high onto these huge ships.

Health and Safety and the Environment

MFT remains committed to continuous improvement in its Health and Safety and Environmental Management Systems. During this quarter, DNV-GL carried out Stage 1 audit for a new standard in Quality Management System ISO 9001 and a combined audit for the Terminals' Management Systems Certification ISO 9001:2015, ISO 14001:2015 and ISO 45001:2018. This year the audit took place partly virtual and partly physical due to the COVID-19 pandemic. The outcome of the audit was positive whereby MFT was awarded ISO 9001 Certification. MFT remains committed to continuous improvement at every level of its business.

Navis Upgrade

As part of Malta Freeport's continuous improvement program in its digital services, the Company has also upgraded the Navis N4/XPS TOS to the latest version 3.8.17. This is the latest major version used by the largest Terminals and includes capabilities for automation and semi-automation. This version offers the latest functionalities and stability and paves the way for other advanced projects namely RTG Optimisation and crane OCR which the Company plans on embarking on.'

2 new Liebherr Quay Cranes

This has been a crucial quarter in terms of progress on the latest 2 new megamax Liebherr Cranes. After months of assembly, both Cranes have been carefully shifted to their final position on the North Quay of Terminal One adjacent to the existing megamax Quay Cranes. After a very thorough testing phase by Liebherr engineers, both Cranes have been handed over and are now in operation.

MFT is now equipped with a 5 megamax Crane formation, confirming Malta Freeport as one of the few exclusive ports in the Mediterranean which have the physical capability to operate the latest class of megamax vessels with a capacity of 23,000 TEUs and over. In addition, these Cranes feature environmental credentials and outstanding technological specifications.



YILPORT LATAM

REGIONAL INFORMATION

Located among Latin America region, YILPORT's multi-purpose terminals offer the best solutions, at different coasts of Ecuador, Peru and Guatemala in the hearts of industrial zones. The terminals are closely connected to main highways offering easy access.

YILPORT Puerto Bolívar, TPE Paita, and Quetzal terminals are utilized with bonded and non-bonded areas, warehouses and supported by end-to-end logistic services.



YILPORT LATAM

Regional Throughputs
Third Quarter 2021



Container
291,907
TEUs



General Cargo
804,157
TON



Liquid
16,316
M³



YILPORT Holding
LATAM Region
Sales and Marketing
Responsibles

Head Office Contact:
Enes GENÇAL
enes.gencal@yilport.com
sm@yilport.com

Region Contact:
Ana Belen BURGOS
ana.burgos@yilport.com

YILPORT Puerto Bolivar Projects are Supported by Local Authorities

Yilport Puerto Bolivar received local authorities that visited the terminal to know advances in projects. Minister of Transport and Public Works - Marcelo Cabrera and Alexandra Villacis Parada - Undersecretary of Ports and Maritime and River Transport toured the facilities of the Puerto Bolivar maritime terminal with the aim of demonstrate the large investments in port infrastructure and equipment that the private operator YILPORT has been making, through the public / private alliance.

During the tour, the Secretary of State signed the Inter-Institutional Cooperation Agreement between the Ministry of Defense, PETROECUADOR, the Ministry of Transport and Public Works (MTO) and the Port Authority of Puerto Bolívar (APPB), for the transfer of land, in order to give continuity to the works being carried out in the construction of dock No. 6, which will have a length of 450 meters, new container yards, refrigeration warehouse and backup areas. This important work will benefit more than 470,000 inhabitants of the south of the country, and its value amounts to USD 176 million.

In his speech, Minister Cabrera pointed out that the construction of pier No. 6 is a reality, “with these important works and investments in port infrastructure and equipment we will modernize and repower the port’s capacity in the province of El Oro, and in this way we will continue promoting the development and productivity of the country”.

So far this year, YILPORT has incorporated several state-of-the-art port equipment in the Orense port, including: 2 STS cranes, 6 RTG gantry cranes, 39 45-foot-high container platforms, 36 tractor trucks and recently the arrival of 2 Reach Stacker and 2 Empty Handler.

65% of the province’s banana export cargo is moved through this terminal.



Mining Sector Choose Puerto Bolivar as The Gateway to Ecuador



YILPORT Puerto Bolivar generates confidence in the mining sector for the import of inputs necessary to produce mineral concentrates.

During the first half of the year, a significant volume of 10000 tons of lime and 2,500 tons of steel balls were received at the Puerto Bolivar terminal as import cargo. Customers mentioned being satisfied with the excellent performance of the terminal in operations, which were executed efficiently and quickly, this added to the proximity of the terminal to the destination of the cargo confirmed that it was a wise choice to choose Puerto Bolivar as the port of arrival.

Puerto Bolivar is the strategic port of the Ecuadorian mining sector due to its proximity to the main areas of small and large-scale mining.

Beach Cleaning Day from Puerto Bolivar Team



On October 16, 2021, YILPORT Puerto Bolivar carried out the “beach cleaning day” as part of its Environmental Management Plan, for which YILPORT Puerto Bolivar brought together the efforts of public institutions, environmental organizations, independent volunteers, maritime associations, people from the community from Jambeli, and YILPORT family.

The activity took place on the island of Jambeli and, approximately 300 meters of beach between the Punta Faro pier and the old lighthouse on the island of Jambeli

were cleaned and back to its all day. During the activity, approximately 150 bags with 2,100 pounds (952.54 Kg) of waste (tires, ropes, plastics, foams, electrical appliances, among others) were removed from the beach and taken to a suitable waste deposit.

With such environmental activities Yilport Puerto Bolivar reconfirms its commitment to caring for the environment and the community.

YILPORT Puerto Bolivar Donates 4 Wi-Fi Access Points to Puerto Bolivar’s Community



Yilport Puerto Bolivar implemented 4 free Wi - Fi network Access Points in Puerto Bolivar parish. This donation, made in coordination with the Ministry of Telecommunications and Information of Ecuador, will allow the population of the parish to benefit from free Internet access.

In the event of delivery and dissemination of this service, held on September 3rd, On a public event in Puerto Bolivar Pier, Alfredo Jurado - LATAM Regional Manager (Corporate Affairs) remarked that Yilport is very pleased to have the opportunity to support com-

munity’s development. Estate Secretary, Minister Viana Maino, stated that thanks to this implementation, about 50 thousand people, both locals and tourists, will benefit from free internet and all the benefits that this entails, such as access to information that allows improvements in the integral development of people.

The WI FI points were placed in strategic public zones that enjoy a tourist influx. The technology of the points is 4G with a capacity of 10Mbps, with a coverage of 200 to 250 m around and unlimited internet.

YILPORT Puerto Bolivar Carried Out Vaccination Against Covid-19



YILPORT Puerto Bolivar together with the Ministry of Health carried out vaccination days against COVID-19.

The vaccination campaign that was carried out between July and August allowed 94% of employees, including YILPORT employees and subcontractors, to access the 2 doses.

During the development of the activity, none of the workers of the different companies presented post-vaccination side effects. Thanks to this activity, it has been possible to perceive an evident decrease in positive cases of COVID-19 among the people who provide service at the terminal.

Transitex Supports the Conservation of the African Forest Elephant

The African Forest Elephant Foundation ("AFEF") has founded in 2016 in response to the decline of African forest elephants. AFEF aims to be part of a global shift on species conservation, leading to its habitat protection.

AFEF's mission is to secure the survival of African forest elephants and the Central African forest habitat to survive into the future.

Transitex first contact with AFEF was in 2017 when the company contributed to the "Boots on the Ground" project by offering the transport, in the partnership with Air Menzies Aviation Company, of a cargo of boots and socks destined to the rangers working on the Dzanga-Sangha Special Reserve, Central African Republic, and was sent from Johannesburg.

In 2021, Transitex contributed again to this cause, this time through a donation destined to help pay the GPS collaring of two male forest elephants. The two are brothers and have been travelling extensively and even crossing borders, which is a risk to both their safety and indeed the safety of the many people that they may have come across. The collars would help avoid or reduce conflicts with humans, such as crops destruction, by providing early warnings about the duo's route least. In the coming years, Transitex is keen to maintain a partnership with AFEF, due to the foundation's inspiring mission.

The African forest elephant mainly lives in the equatorial forests of the Congo Basin, which extends through many countries, including Cameroon, the Central African Republic, the Democratic Republic of the Congo, Equatorial Guinea, Gabon, and the Republic of the Congo. The forest elephant is the smallest species of the elephant group and the most threatened, recently having been reclassified as critically endangered by the International Union for Conservation of Nature (IUCN).

To know more about the African Forest Elephant Foundation, visit its website and see how you can help save Africa's rainforests and its elephants.



Transitex has Arrived in the Netherlands



Transitex continues its plans for geographic expansion in Europe. With a new office in Rotterdam, just a short distance away from the largest seaport on the continent, our network is now more complete.

Rotterdam is the main port of entry for cargo in Europe, which is a strategic location for Transitex. We believe that it will allow us to improve the services we already offer to exporters globally. But mainly to those in the Southern hemisphere.

In 2019 Transitex opened its first office in the UK, starting a new phase of developments through Europe, with new branches, such as the now official Transitex Netherlands, and new and improved facilities, with exclusive emphasis on the reefer warehouse to be built in Iberia.

Transitex Netherlands
Sales@transitex.nl
+31 6 83948113



The World Closer
Forwarder and support services



NETWORK
● Branches
● Agents

www.transitex.com

YILDIRIM Academy is Moving with Steady Steps as A Milestone



The accountability training program started in Turkey within the scope of the YILDIRIM Academy Talent Development program. The steps of the program designed in a holistic structure consist of 3 steps: webinars, pieces of training, follow-up & workshops. The core purpose of the Accountability training program is to increase awareness of the responsibility and influence areas of employees from all levels within the corporate culture and to spread the awareness of self-responsibility within the organization. The webinars, the first step of the program, were completed in April with six groups. The program flow continues with the training of the specialist group. Preparations for the studies will continue after the webinars and trainings have started.

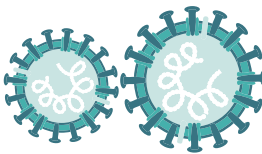
The Sales & Marketing Development Program, which is one of the programs designed specifically for the needs of the department, is among the important studies of this year. The program had designed with the contributions of Serdar Salepçioğlu and Güneş Ufuk, the valuable trainers of K2C Consulting; Each Yılport Holding members related to Sales & Marketing business processes are a participant in the program. The program designed with the Blended learning system consists of 3 different components: online classroom training, digital training content and internal training. With the launch meeting on September 15, the program was introduced to all participants in the regions, and then the content structure of the program was shaped with strategy workshops. The training processes started with the first internal training of the program, “Maritime and Commercial Law”. The training was designed in line with the studies of Yıldırım Holding Senior Legal Counsel Vuslat Ubogu and was carried out in 2 groups with the participants. The program will continue with the studies to be carried out under the main topics such as Strategic Planning, Sales Management and Customer Experience.

Analysis studies for the last quarter of 2021 and 2022 training needs have been completed. The organization process of the training programs to be developed for the needs has started.

Above
YILDIRIM Academy
Online Training

CORONAVIRUS 2019-nCoV

SAFETY ADVICES AND TIPS



SYMPTOMS



FEVER



COUGH



SHORTNESS
OF BREATH



SORE THROAT

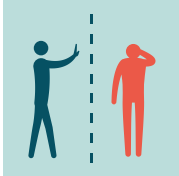


HEADACHE

PREVENTION



WASH HANDS WITH
WATER AND
SOAP/SANITIZER,
AT LEAST 20 SECONDS



AVOID CONTACT
WITH SICK PEOPLE



DON'T TOUCH EYES,
NOSE OR MOUTH WITH
UNWASHED HANDS



WEAR A MASK



AVOID
CROWDED PLACES



AVOID CONTACT WITH
ANIMALS AND ANIMAL
PRODUCTS



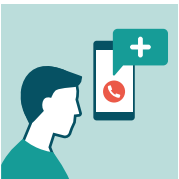
DO NOT SHARE
EATING UTENSILS
AND FOOD



DON'T EAT RAW FOOD,
THOROUGHLY COOK
MEAT AND EGGS



AVOID TRAVELLING TO
AFFECTED AREAS
UNLESS NECESSARY

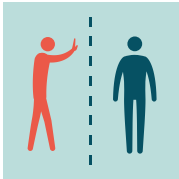


IF YOU BECOME SICK
SEEK MEDICAL CARE
IMMEDIATELY

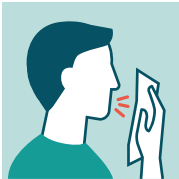
IF YOU ARE INFECTED



STAY AT HOME



AVOID CONTACT
WITH OTHERS



COVER YOUR NOSE
AND MOUTH WITH
TISSUE OR ELBOW
WHEN SNEEZING



PUT TISSUES
IN THE TRASH BIN
AND WASH HANDS



KEEP OBJECTS AND
SURFACES CLEAN



We Care Today for Our Tomorrow

YILPORT Holding is expanding its ports operations internationally, it is imperative that we are committed in working in a sustainable and reliable manner. It takes a holistic approach to integrate sustainability within all aspect of a business. This approach is essential in order to develop a robust business for our people, customers, environmental and the communities within our operating companies.

3rd Place at the 2nd Year of GRESB Assessment



This year we made tremendous improvement in our GRESB assessment performance for YILPORT Sweden and elevating our rankings to 3rd Port Companies (Private Sector) in Europe and 10th within the GRESB Port Companies. With this accreditation, we are setting the foundation for the future.

YILPORT Holding have made a significant progress in expanding its port presence internationally, the future is full of possibilities and opportunities. We will continue to grow together with our respective stakeholders by committing to deliver unrivalled values to our customers and business partners. We are committed to integrate our sustainability values and responsibilities in our operating activities and business strategy. Let's make this new sustainability journey together for our future generation.

“What does Sustainability Means to Us?”



Sustainability

is a new journey in YILPORT. This journey is important for us not only for the business but also to safeguard our environment within our footprint and for the generation to come. We need to focus in fulfilling the needs of the present without damaging the needs for our future generation living in more equitable world.

co- CEO
Nicolas SARTINI



Ian James
COO

Increasingly businesses have an obligation do what is right for the present and leave a lasting legacy. At Yilport, OUR PEOPLE, OUR WORLD, OUR LEGACY are the cornerstones of our sustainable development.



Erhan CIOGLU
CMO

Sustainability is a very old word with a new extended meaning comes to our lives with climate changes generally called “Global Warming”. It is the balance between the environment, equity, and economy. It is basically the heritage from us to next generations such as our footprint on earth which is not visible now and will be visible in the future. So, Sustainability for me is respect to myself, respect to nature and respect to equal living rights of next generations and all living things.



Eryn DINYOVSKY
Regional GM
for NORDIC

Sustainability is the new foundation for growth. It is essential for building the business on not only for the sake all the current users and the supply chain they support, but also for the future users. The future demands that we all strive for better solutions to solving the challenges facing our climate and society, the port and terminal sector is not exempt from this responsibility.



Diogo MARECOS,
Regional GM
for Iberia

Sustainability is an economic development model that seeks to improve human beings' lives, while ensuring the environment preservation. Through ecological balance, aims to satisfy our needs without compromising the future. It's essential to ensure YILPORT's competitiveness, as it contributes decisively to our efficiency, operational improvement, risk management and differentiation.



Eduardo CERDEIRA
General Manager
for Puerto Bolivar

I believe that current levels are far beyond what is sustainable and that we have very little time to adjust our behaviors before nature takes over and forces us to understand that we are an animal species like any other and that we are subject to natural laws that will ultimately force us to comply with them. We can either make the adjustments ourselves or face a harsh reckoning in the not too distant future.

Our work focuses on changing away from complex, paper-based and fragmented processes and working towards creating sustainable and transparent end to end supply chains. Our main contribution to this transition is to integrate our services to offer more sustainable business options that are easier to access far its employees and business partners.



“

The pace of change with regards to Sustainability is greater than at any stage in my career to-date. It is a vital element in today’s business and a responsibility we want to fulfill every day. To successfully drive our Sustainability journey across our businesses is getting the full support from Top Management before cascading down to the employees. They need to be outspoken on Sustainability issues. Embedding these understanding across the organization is one of my medium-term targets. There are those functions that are “pulling’ for knowledge, whilst others we have to push materials and training. It takes persistence and time to move the needle, if you get a “no” once, you just have to **keep on trying...**

Global Sustainability Director
Roszy JAMES

”

Global Progress on Sustainability so far;

TURKEY



- To install aerosol fire extinguisher on the QC and RTG Cranes for both Gebze and Gempport .
- Gempport – Completed the waste management system, segregating different types of waste i.e seawater, chemicals
- Solventas – To install flame detector to fire sensitive areas, this is to comply with Turkey Sevesco regulation
- GEBZE – Management exploring the shore powered for vessels at the terminal

NORDIC



- Oslo – Moved into their Solar powered Terminal building in Sept
- Obtained certification all electricity are renewable
- New environmentally friendly Reach Stackers & Empty Equipment Handler
- Health and Safety - Making communication & Training easily accessible thru Motimate App
- Sweden – New electrified cranes
- Shore power to Quay 7
- “Health Challenge” activities contributed to the increased activities level of our employees by 35% in 8 Weeks.

LATIN AMERICA



- PBO – Started “Zero Plastic Use” on June 7th campaign.
- PBO – Just completed the “Beach Cleaning” activities
- TPE – To reduce the diesel consumption by 10% in the existing 4 RTG
- PRQ – To improve the existing waste management process/system
- Completed the Free Health Screening for employees.

ITALY



- Water treatment plant does not meet the Country standard law. The drainage pipe needs to be replaced due to seepage of seawater. This is an environmental project but its also part of facility development.
- Changing the lighting poles to LED Lights.

Our core pillars priorities and approach towards achieving these goals:



ECONOMY

Business Strategy Economic Value Creation

- Ensure a sustainable business growth through continuous improvement on our strategic and business approach
- Ability to adapt in a fast-changing marketplace and manage the challenges of the diverse range of stakeholder groups



ENVIRONMENTAL

Energy, Fuel, Water Consumption and Waste Reduction

- Working towards “Decarbonizing Our Supply Chain”
- Adopting responsible Consumption and Waste Reduction in our operational environment.



SOCIAL

Talent Management & Engagement, Gender Diversity, Employee Health & Safety

- Ensure a sustainable business growth through continuous improvement on our strategic and business approach
- Ability to adapt in a fast-changing marketplace and manage the challenges of the diverse range of stakeholder groups



FINANCING

- Sustainability Linked Financing (Turkey Region)
- Green Loan (Nordic) – Secured funding with SEB of 100M SEK for Gavle expansion plans
- EU Funding – Looking for funding opportunities for renewable energy projects for Portugal/ Spain & Sweden for Hydrogen Fuel Cell Technology with Hyster-Yale
- Solar Projects – Collaborate with YILDIRIM Energy for Solar Projects in Turkey, Portugal, Italy and Ecuador



FRAMEWORK

- Sustainability Policy State-ment-Implemented
- Employee Code of Conduct – Completed
- Supplier Code of Conduct – Completed
- Yilport Webpage – Final stages of development
- EU Directives- Whistleblower policy and tools



CERTIFICATION

- GRESB Assessment – Successfully improved our scores significantly (from 14 to 76/100) bringing YP to no. 3 position within the EU port companies.
- Evaluating ISO Certification Cost for NORDIC region still in progress
- Explore ESG assessing bodies for certification cost such as GRESB, Sustainability and Vigeo Eiris



ENGAGEMENTS

- Appoint and hosting monthly calls with Sustainability Rep in the organization
- Environmental Global Data – Roll out
- Exploring tools to automate the environmental data
- Develop Sustainability Training Content for Employees



GAME CHANGER IN PORT OPERATIONS AND MANAGEMENT

GLOBAL REACH

YILPORT Holding was established in August 2011 to combine the port and container terminal operations of YILDIRIM Group under one roof.

The Holding has a portfolio of **4 Terminals in Turkey, 7 in Portugal, 2 in Spain, 2 in Sweden, 1 in Norway, 1 in Malta, 1 in Italy 1 in Peru, 1 in Ecuador and 1 in Guatemala.**

Also ETI Logistics and Transitex, global logistics and forwarding companies are part of YILPORT portfolio.

YILDIRIM Group



YILPORT Holding

