

CONNECTION

COREX PORTS & TERMINALS / YILPORT HOLDING

STAY CONNECTED

2025

A Year of Momentum

6

A YEAR OF MOMENTUM:
YILPORT HOLDING DELIVERS
GROWTH, EXPANSION
AND INTEGRATION

12

YILPORT ATSL-TAKORADI
TERMINALS NEXT PHASE
DEFINED THROUGH HIGH-
LEVEL TALKS

28

10 YEARS ANNIVERSARY
A DECADE OF GROWTH
IN THE IBERIAN PENINSULA
A DECADE OF GROWTH IN
THE IBERIA PENINSULA



HOLDING

YILPORT Liscont Drives Operational Excellence with Its New Building **5**
 A Year of Momentum; YILPORT Holding Delivers Growth, Expansion and Integration **6**

01**NORDIC**

YILPORT Oslo Powers Europe's First Zero-Emission Container Corridor **22**

YILPORT Stockholm Nord Investing in Sustainable Rail Logistics Across Europe **25**

03**05****MEDITERRANEAN**

Malta Freeport Terminal Squaring-Off Project Moves Forward **35**

Strengthening Communities Through Impactful CSR Initiatives **36**

07**AFRICA**

YILPORT Holding Strengthens Operational Capacity in Ghana with 6 New Terberg Terminal Tractors **50**

**02****TÜRKİYE**

YILPORT Gebze Terminal Enhances with Pre-Gate Relocation **16**

YILPORT Gebze Terminal Excels in Specialized Project Cargo Loadings **18**

04**IBERIA**

10 Years Anniversary A Decade of Growth in the Iberian Peninsula **28**

YILPORT Elvas Inland Terminal: Expanding Iberian Operations **31**

06**LATAM**

Nine Years Connecting Southern Ecuador to the World **44**

YILPORT Puerto Bolívar Achieves Record-Breaking Results in 2025 **45**

PEOPLE

YILPORT Gebze Terminal Welcomes Future Logistics Leaders from Samsun University

YILPORT Gebze Terminal Inspires the Next Generation Through GREENPORT Project **57**

08**CONNECTION MASTHEAD**

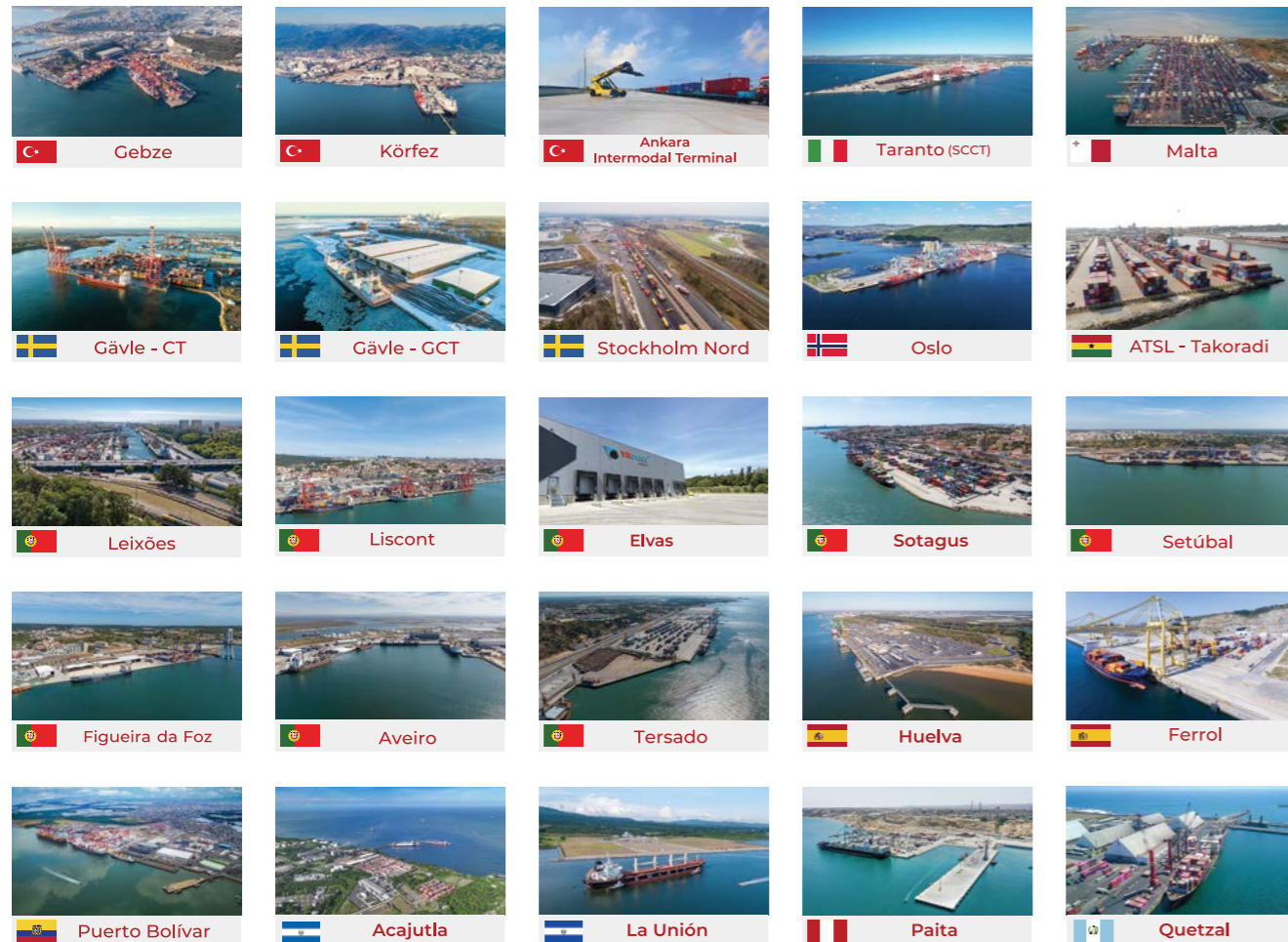
Executive Editor-in-Chief Ece YAVUZ Guest Editors Kemal Ekin AYSEL

Creative Office Öykü GÜNAY / Ece YAVUZ

Regional Editorial Team Headquarters, Türkiye, Nordic, Africa Ece YAVUZ IBERIA & LATAM Larissa FLORA

At YILPORT / CoreX Ports & Terminals, excellence is the strategic pillar that drives all our global business endeavors.

Today, our network spans 22 ports and terminals and 6 inland dry terminals across key international trade corridors. We are committed to building process excellence across our operations, combining our international experience with local expertise to set new standards for the global port and terminal industry.



Drewry Global Container Terminal Operators Ranking (2025)



www.yilport.com



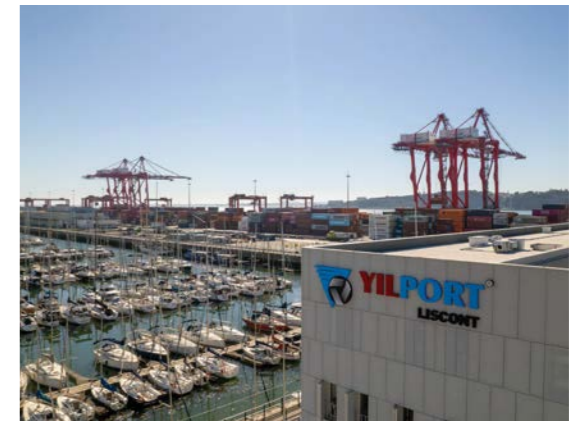
YILPORT Liscont Drives Operational Excellence with Its New Building

In March 2026, YILPORT Liscont unveiled its new building, a landmark development for YILPORT Iberia and its partners. Bringing together a cutting-edge Border Inspection Post, modern offices, Customs and DGAV teams, a dedicated Maintenance & Repair area, and enhanced rest spaces for front line staff, the facility sets a new standard for speed, safety and efficiency in terminal operations.

The inspection center, the most advanced in Portugal and fully compliant with EU regulations, features multiple inspection docks with automated unloading ramps, insulated doors for temperature control and real-time container monitoring. Dedicated equipment at each dock ensures minimal waiting times, while climate-controlled laboratories keep cargo safe and compliant. Solar Panels with battery backup provide uninterrupted power, supporting smooth and sustainable operations. Together with continuous monitoring and strict hygiene standards, these

features guarantee reliable, efficient and high-quality performance.

This new infrastructure is a true game changer for the terminal. It strengthens operational reliability, raises service standards and sets a new benchmark for modern port operations. Faster, safer and more efficient, the building combines innovation, sustainability and excellence to support high-standard inspections and seamless cargo handling.





YILPORT Holding reported a strong full-year 2025 operational performance, achieving a 12% increase in global container handling volumes, reaching 8.4 million TEUs, and a 10% rise in general cargo volumes.

SUSTAINED GROWTH DRIVEN BY GLOBAL OPERATIONS

Container growth in 2025 was supported by recovery momentum in Latin America, expanded intermodal capabilities in Europe, and operational normalization in newly integrated terminals.

IBERIA STRENGTHENING THROUGHPUT AND INTERMODAL EXPANSION

Iberia Region delivered solid growth in 2025, with Liscont increasing volumes by over 14%, Leixões reporting +9% container growth and +110% Ro-Ro growth, Huelva container terminal sustaining monthly volumes above 20,000 TEUs with expanded transshipment activity, Ferrol container terminal doubling transshipment volumes year-on-year, and Aveiro port achieving a 20% increase in steel cargo volumes supported by new warehouse capacity and 100-ton MHC deployment. Intermodal volumes surged by 400%, driven by closer integration between terminals and hinterland logistics.

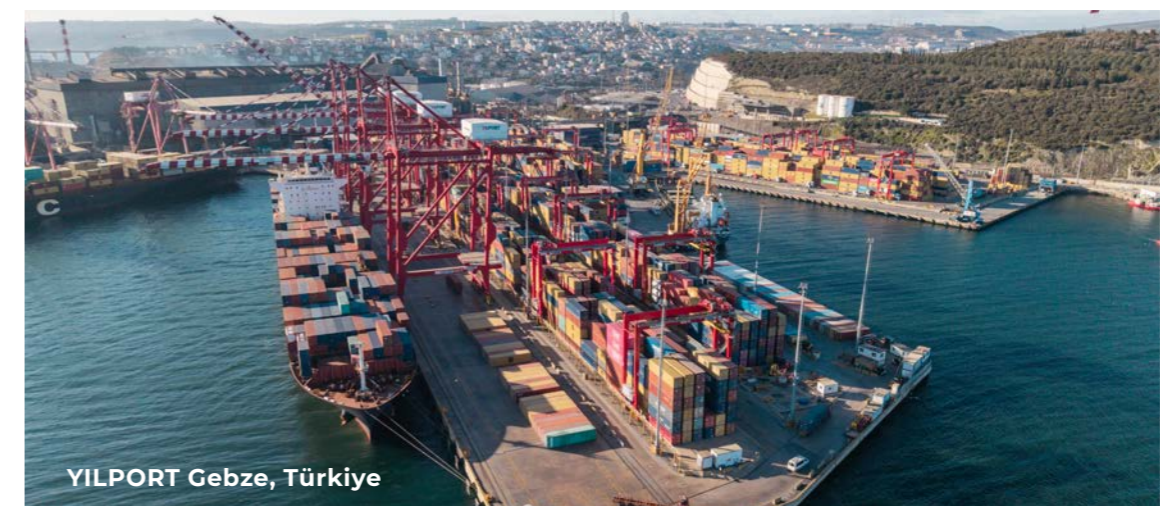
LATIN AMERICA DRIVING VOLUME ACCELERATION

In Latin America, Puerto Bolívar recorded an exceptional volume growth of 63% increase in container volumes, supported by investments in equipment readiness, process optimization, and improved schedule reliability. Following the operational transition in El Salvador, YILPORT restored Acajutla and La Unión ports to normalized operations, achieving a 14% increase in volumes and regaining gateway cargo flows. La Unión Port returned to active deployment, increasing from zero to more than seventy vessel calls within one year.



TÜRKİYE DELIVERING INDUSTRIAL AND HINTERLAND GROWTH

Türkiye Region delivered steady growth in 2025, with container volumes increasing by 12% across the region and general cargo rising by 31% in Gebze hinterland, reflecting diversified cargo momentum and strengthened industrial demand. The Ankara Intermodal Terminal recorded a 250% increase in rail-linked volumes, providing direct rail connectivity to Gebze and Körfez terminals and significantly enhancing hinterland access, operational efficiency, and integrated port-rail solutions.



NORDIC REGION ADVANCING EFFICIENCY AND SUSTAINABILITY

Nordic Region delivered disciplined growth in 2025, with YILPORT Gävle terminal recording a 12% increase, supported by integrated rail connectivity via Stockholm Nord. Operational efficiency is leveraged via A-RTG cranes, contributing to improved yard productivity and service reliability. YILPORT Oslo achieved 11% volume growth, reflecting steady market recovery and strong customer confidence with investments in electric terminal tractors, charging infrastructure, and forthcoming yard equipment strengthened YILPORT Oslo terminal's sustainable and operationally resilient positioning.



YILPORT Gävle, Sweden

AFRICA EXPANDING CAPACITY AND MARKET PRESENCE

In Africa, YILPORT ATSL-Takoradi port recorded a year-on-year volume increase, effectively doubling throughput since operations commenced in 2023. Driven by rising demand and increased vessel calls, the terminal received two additional Mobile Harbour Cranes to further enhance capacity and operational efficiency. Across the network, feeder connectivity improvements, new service deployments, and expanded refrigerated cargo routes contributed to overall throughput growth.



YILPORT ATSL-Takoradi, Ghana



FOUNDER, CHAIRMAN & CEO ROBERT YÜKSEL YILDIRIM

This performance is the result of long-term vision, disciplined execution, and the commitment of our global teams," said Robert Yüksel YILDIRIM, Founder & Chairman and CEO of YILPORT Holding and CoreX Holding B.V.

"We have consistently invested in the right markets, strengthened our people and processes, and deployed technology to build a globally competitive platform. Our growth is not measured solely by volume, but by the reliability of our operations, the strength of our partnerships, and the resilience of our global network. We will continue to lead with strategic clarity, operational discipline, and a firm commitment to long-term value creation."

OPERATIONAL INTEGRATION ENHANCING END-TO-END PERFORMANCE

In addition to volume growth, 2025 marked a year of structural consolidation, digital integration, and inland connectivity expansion, enhancing predictability from berth to yard to gate for YILPORT.

EXPANDING MULTIPURPOSE AND GENERAL CARGO CAPABILITIES

General cargo volumes increased by 10% year-on-year, supported by diversified cargo flows across bulk, breakbulk, and project cargo segments. Newly integrated terminals in West Africa and Central America contributed to volume expansion and strengthened YILPORT's multipurpose port positioning.

The company continues to operate as a one-stop-shop port operator, offering container, dry bulk, general cargo, and Ro-Ro services under a unified operational model.

"2025 was a defining year in strengthening our competitive positioning while executing structural transformation," said Erhan ÇILOĞLU, Deputy CEO & CMO of YILPORT Holding.

"Our priority was to convert scale into commercial results, improving how efficiently our assets generate revenue, increasing the diversity of higher-value cargo segments,

and expanding long-term contracted volumes that provide stronger earnings visibility. Across strategic trade corridors, we deepened customer partnerships and enhanced our integrated multipurpose port platform. In a consolidating global market, leadership depends on execution discipline and commercial relevance. We are positioning YILPORT not only as a Top 10 container terminal operator by volume, but as a performance-driven platform focused on sustainable growth, resilient profitability, and long-term value creation."

FOCUSED GROWTH STRATEGY FOR 2026

Entering 2026, YILPORT remains focused on disciplined growth and operational reliability, driving both organic expansion within its existing portfolio and selective inorganic opportunities aligned with its long-term strategy. Türkiye, North America, key EU markets, Latin America, and Africa represent priority regions where the company will drive both organic and inorganic growth initiatives, supported by inland connectivity and infrastructure investments.

With a balanced growth roadmap and scalable operating model, YILPORT is well positioned to strengthen its competitive standing among the world's leading container terminal operators. (Ref.*Equity based throughput league table - Drewry 2024)



Accelerating Growth in Ghana's Western Corridor with 2 Mobile Harbor Cranes at Takoradi



YILPORT Holding continues to strengthen Ghana's Western Corridor with targeted operational investments at YILPORT ATSL-Takoradi, supporting both immediate capacity needs and long-term terminal transformation.

As part of this ongoing development program, two additional Mobile Harbor Cranes (MHCs), have arrived at YILPORT ATSL-Takoradi in Ghana. With this delivery, ATSL's mobile harbor crane fleet has increased to 5 units, significantly enhancing vessel handling capacity, berth productivity, and operational resilience. As part of YILPORT Holding's operational excellence and terminal development program in Ghana, this fleet expansion supports higher productivity levels, improved operational efficiency, and enhanced service reliability across

port operations, reinforcing the terminal's capacity to handle growing cargo volumes including transshipment containers and supporting the terminal's increasing operational momentum.

Since commencing operations on September 4th, 2024, YILPORT ATSL-Takoradi has recorded consistent year-on-year growth, effectively doubling throughput levels. This performance has been supported by rising trade demand and increased vessel calls.

TRANSITION TOWARD A MODERN CONTAINER TERMINAL MODEL

In parallel with immediate capacity expansion, YILPORT is executing a structured terminal transformation roadmap. 6 units of Ship-to-Shore (STS) quay cranes and Rubber-Tyred Gantry (RTG) cranes are currently under tender. And, we have ordered 15 E-RTG cranes from Kone Cranes to be delivered in 16-20 months. Operations are planned to transition to a full STS-RTG container terminal model within the next two years.

This phased approach combines short-term flexibility through mobile equipment with long-term infrastructure development, Takoradi in line with global container terminal standards.

LONG-TERM COMMITMENT TO GHANA

Commenting on the milestone, **Mr. Yüksel YILDIRIM, Owner, Chairman and CEO of YILPORT Holding** said:

"As I committed in February 2026, I am delivering on that commitment with the addition of two mobile harbor cranes at Takoradi. The arrival of these two additional mobile harbor cranes represents a concrete milestone in our long-term commitment to Takoradi and the development of Ghana's Western Corridor.



Our approach is structured and deliberate. We are not simply increasing capacity through equipment deployment; we are building a terminal system that delivers consistent efficiency, operational reliability, and globally aligned performance standards. At the same time, these investments are part of a broader transformation roadmap. While mobile equipment allows us to respond rapidly to current market demand, our transition toward a full STS-RTG container terminal model will elevate Takoradi to the same operational level as leading international ports.

We see Takoradi not only as a national asset, but as a strategic regional gateway. Its location, hinterland connectivity, and expansion potential position it as a competitive corridor for landlocked economies such as Mali and Burkina Faso. Our role is to unlock that potential through disciplined investment and execution."

Mr. Erhan ÇILOĞLU Deputy CEO of YILPORT Holding and Chairman of YILPORT ATSL-Takoradi stated that:

"Our objective is clear: to develop Takoradi into a competitive, efficient, and future ready deep sea multipurpose terminal. We believe that consistent investment, strong collaboration with our partners, and adherence to global standards are the foundations for sustainable port development in Ghana."



YILPORT ATSL - Takoradi Terminals Next Phase Defined Through High-Level Talks

YILPORT Holding leadership met with the President of Ghana to discuss the Western Corridor strategy and long-term development plans for the YILPORT ATSL-Takoradi Terminal.

Following recent high-level engagements in Ghana, YILPORT Holding Founder & Chairman Robert Yüksel YILDIRIM and YILPORT Holding Deputy CEO & YILPORT ATSL-Takoradi Chairman Erhan ÇILOĞLU met with H.E. John Dramani Mahama, President of the Republic of Ghana, to discuss the future of the Western Corridor and the long-term development of the Port of Takoradi.



The meeting focused on a shared strategic vision, defined next steps, and potential new investments to strengthen regional connectivity and enhance port competitiveness, in close coordination with key transport and maritime authorities.



YILPORT Leadership Visits ATSL-Takoradi Terminal

As part of his visit to Ghana, YILPORT Holding Founder & Chairman Robert Yüksel YILDIRIM, accompanied by YILPORT Holding Deputy CEO & YILPORT ATSL-Takoradi Chairman Erhan ÇILOĞLU, visited YILPORT ATSL-Takoradi to observe ongoing operations and recent developments on site.

The visit was hosted by YILPORT-ATSL Takoradi General Manager Ferhat AKKAYA, who provided a comprehensive briefing on terminal operations and equipment while guiding the leadership team across the facility. During meetings with terminal teams, Mr. YILDIRIM reviewed operational performance and growth trends and stated that, in response to increasing business volumes and the need to further enhance operational efficiency,

two additional MHC cranes will be deployed to YILPORT ATSL-Takoradi. The cranes are currently ready in Portugal, with shipment arrangements underway, and are expected to be on site between May and June.

This visit reflects YILPORT Holding's hands-on leadership approach and close engagement with its terminals.

TÜRKİYE REGIONAL INFORMATION

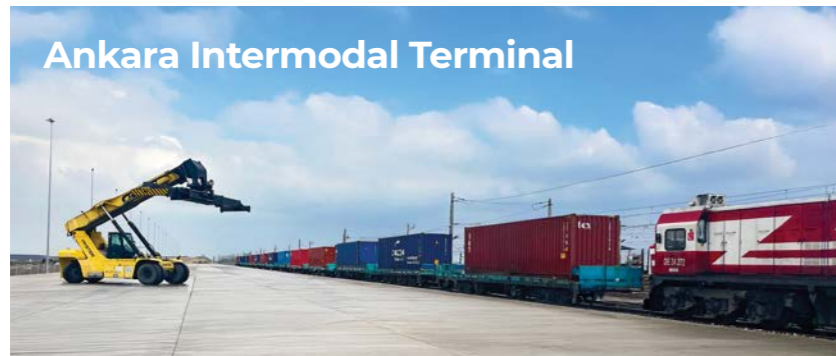
Located in the Marmara region of Türkiye, YILPORT's multipurpose terminals provide the best solutions across different coasts at the heart of industrial zones. With close connectivity to main highways, they offer easy access for logistics operations. YILPORT Gebze, Körfez, and Ankara Intermodal Terminal are utilized with bonded and non-bonded areas, warehouses and supported by end-to-end logistic services.



Gebze



Körfez



Ankara Intermodal Terminal

Q1 - 2025
Regional
Throughputs



Container
136,173
TEUs



General Cargo
486,154
TONs

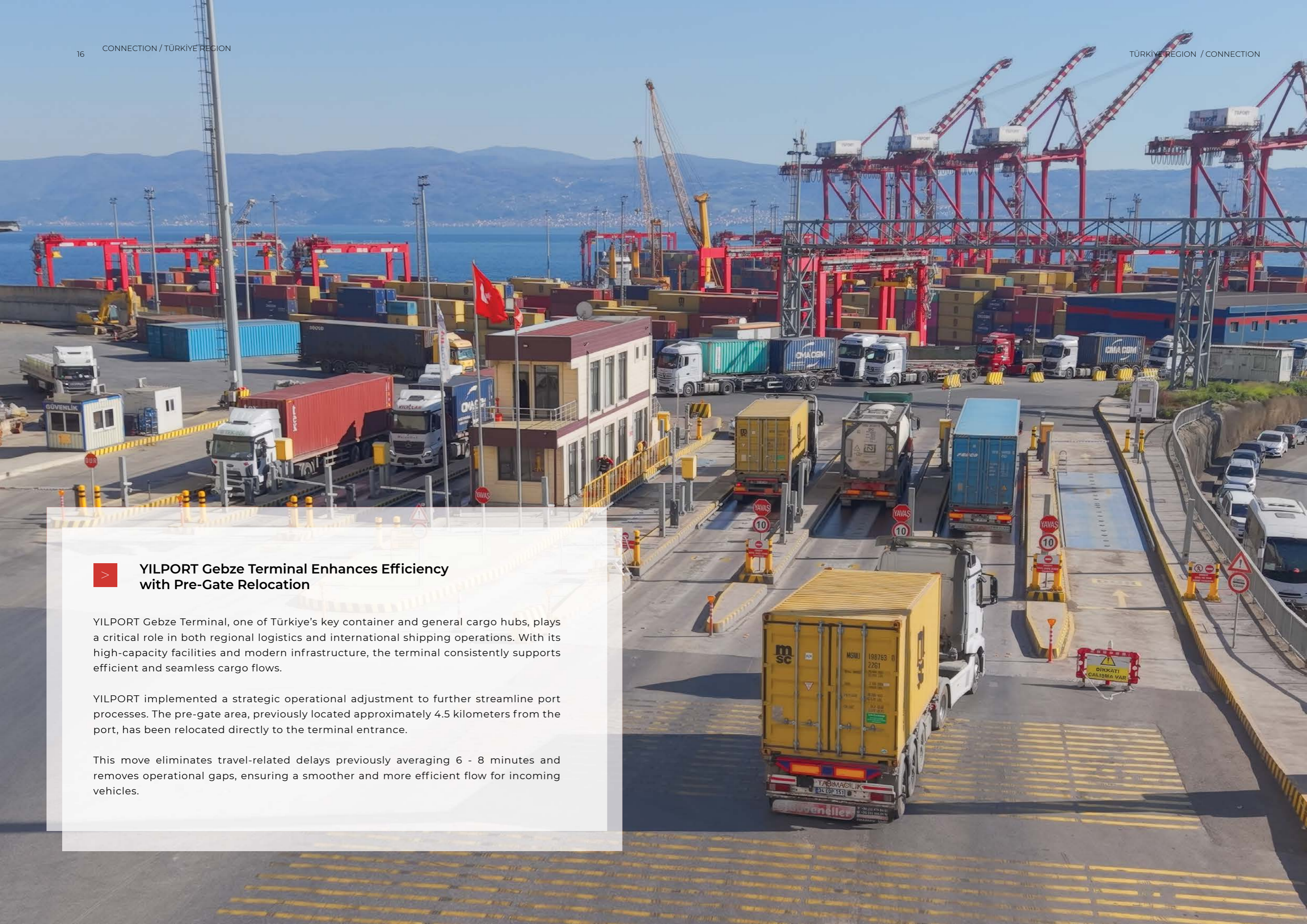


YILPORT Holding Türkiye Region Sales and Marketing Contact

HQ Sales & Marketing:
global.commercial.dg@yilport.com

Region:
Erhan ERKEKER
erhan.erkeker@yilport.com
Ankara Intermodal Terminal:
Enes GENÇAL
enes.gencal@yilport.com





> YILPORT Gebze Terminal Enhances Efficiency with Pre-Gate Relocation

YILPORT Gebze Terminal, one of Türkiye's key container and general cargo hubs, plays a critical role in both regional logistics and international shipping operations. With its high-capacity facilities and modern infrastructure, the terminal consistently supports efficient and seamless cargo flows.

YILPORT implemented a strategic operational adjustment to further streamline port processes. The pre-gate area, previously located approximately 4.5 kilometers from the port, has been relocated directly to the terminal entrance.

This move eliminates travel-related delays previously averaging 6 - 8 minutes and removes operational gaps, ensuring a smoother and more efficient flow for incoming vehicles.



Yatch Operations
at YILPORT Gebze

YILPORT Gebze Terminal Excels in Specialized Project Cargo Loadings

YILPORT Gebze Terminal successfully executed two specialized project cargo loadings, highlighting its expertise in handling complex operations. The first vessel measured 16 meters in length and weighed 31 tons, while the second spanned 19.5 meters and weighed 41 tons.

The operations were carried out using a ship-to-ship loading method, requiring exceptional precision and coordination beyond standard procedures. Both vessels were loaded under MSC's NWC service from Gebze and dispatched to the Port of Rotterdam.

These successful loadings underscore YILPORT Gebze Terminal's capacity for niche project cargo operations, serving as a strategic reference for attracting similar high-value shipments in the future and reinforcing customer confidence. As a gateway to Türkiye's largest industrial hinterland and consumer market, the terminal continues to operate around the clock, demonstrating operational excellence and reliability.



Integrated Warehouse Infrastructure Boosts Operational Efficiency

Located approximately 700 meters from the port site, the warehouse continues to support an end-to-end service approach by contributing significantly to operational processes. With storage and container operations carried out simultaneously, the facility is positioned as a natural extension of port activities.

With a total area of 7,200 m² comprising 2,700 m² of covered space and 4,500 m² of open yard the warehouse enables the efficient handling of high-tonnage cargo. This strong infrastructure ensures a seamless flow between port operations and warehouse activities, leading to increased speed and efficiency in handling processes.

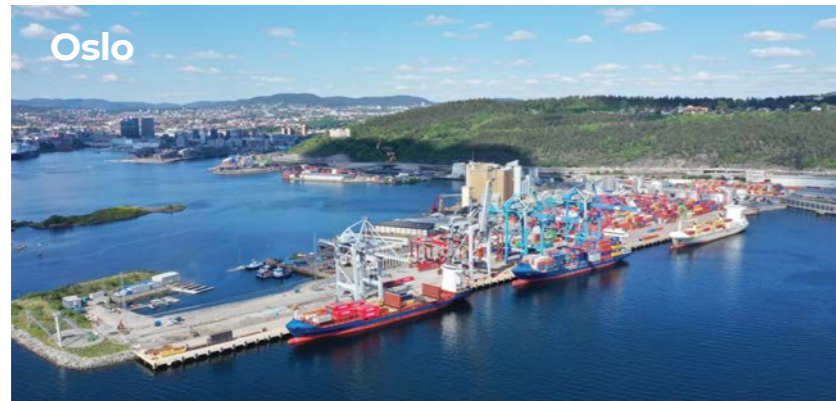
Designed to accommodate a wide range of cargo types, the facility successfully handles products such as steel coils, big bags, aluminum, plates, and iron and steel materials. This versatility allows for the delivery of flexible and reliable solutions to a broad customer base.

YILPORT Gebze
Bonded & Non-bonded Warehouse



NORDIC REGIONAL INFORMATION

Located in the Scandinavian region, YILPORT's multipurpose terminals provide the best solutions across different coasts of Norway and Sweden at the heart of key industrial zones. These terminals offer close connectivity to main highways and easy access. YILPORT Gävle, Stockholm Nord, and Oslo terminals are utilized with bonded and non-bonded areas, warehouses and supported by end-to-end logistic services.



Q1 - 2025
Regional
Throughputs



Container
141,449
TEUs



General Cargo
364,207
TONs



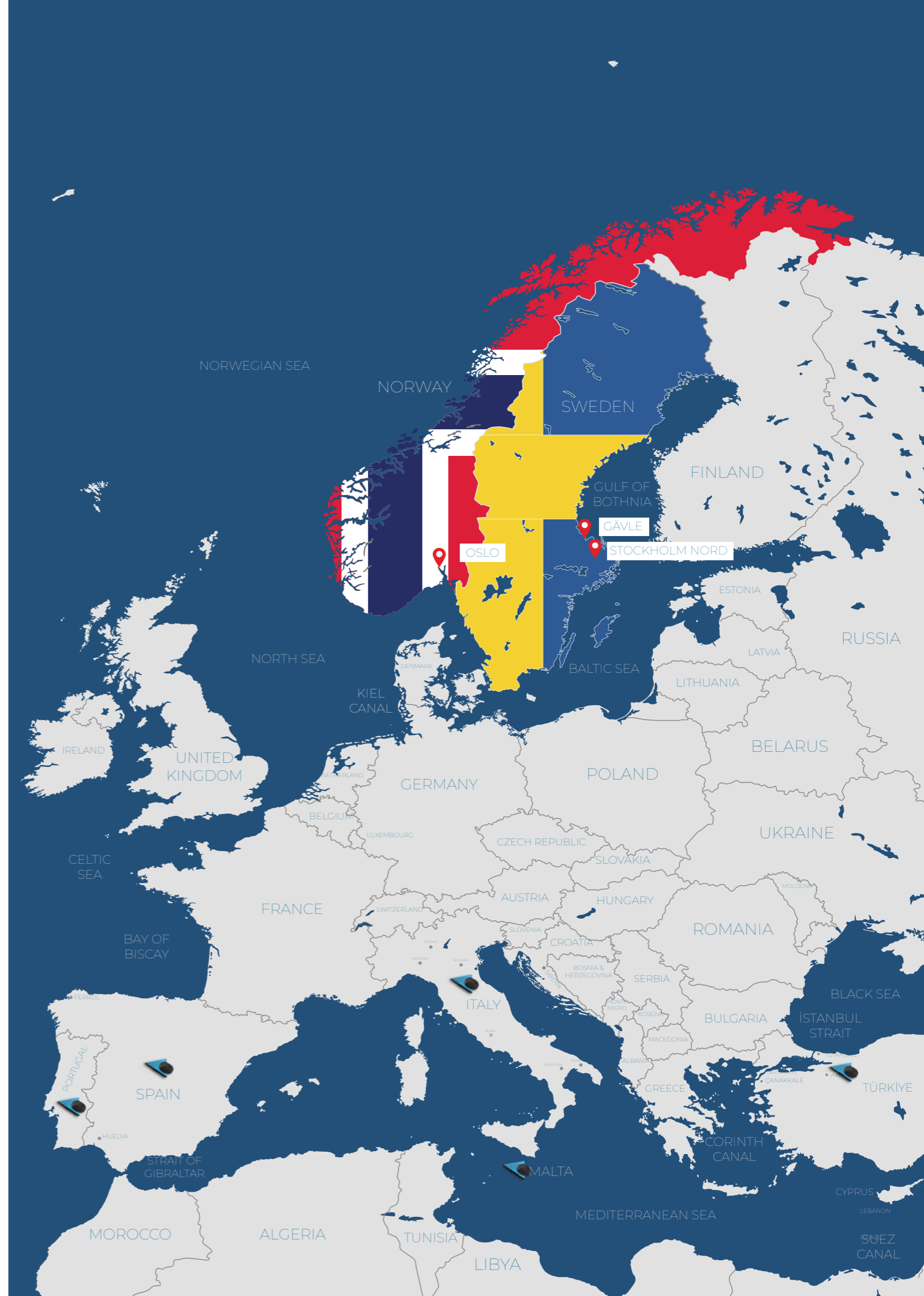
Ro-Ro
11,329
CEUs



YILPORT Holding Nordic Region Sales and Marketing Contact

Head Office: Sales & Marketing
global.commercial.dg@yilport.com

Region: Joseph MUHUMUZA
joseph.muhumuza@yilport.com





YILPORT Oslo, Norway

YILPORT Oslo Powers Europe's First Zero-Emission Container Corridor

YILPORT Oslo Terminal is playing a central role in advancing sustainable logistics in Europe with the launch of a new weekly container service connecting Rotterdam, Oslo, Brevik, and Bremerhaven. The service, operated by North Sea Container Line (NCL) in partnership with Yara International, establishes one of the world's first zero-emission freight corridors for container transport.

"Our terminal will soon offer fully emission-free container handling, creating a seamless green flow of goods from the continent to Oslofjord," says Bjørn Engelsen, Terminal Manager at YILPORT Oslo Terminal. "This initiative strengthens our commitment to sustainable operations while supporting efficient and predictable logistics for our customers."

The corridor will initially be served by MV Tunadal, handling Yara's weekly fertilizer exports. Later this year, the ammonia-

Bjørn Engelsen
Terminal Director

powered, zero-emission vessel Yara Eyde will enter service, demonstrating the potential of green fuels in container shipping.

Port Director Ingvar M. Mathisen highlights the broader impact: "This route will shift more cargo to sea and contribute to Oslo's vision of becoming one of the world's most efficient and environmentally friendly city ports. YILPORT's investment in zero-emission terminal operations is key to achieving this."

The weekly service departs Rotterdam every Tuesday, returning the following week, offering both imports and exports a predictable, cost-effective, and sustainable alternative to road transport. By integrating zero-emission terminal handling with a green shipping corridor, YILPORT Oslo is helping set a new standard for environmentally conscious logistics in Northern Europe.

Port Director
Ingvar M. Mathisen



YILPORT Oslo Terminal Takes a Sustainable Step with Electric Reachstackers

YILPORT Oslo Terminal is advancing its sustainability goals with the introduction of three new electric reachstackers. This investment accelerates the shift from diesel to fully electric equipment, reducing CO₂ emissions while maintaining operational efficiency.

YILPORT Oslo Terminal has partnered with Kalmar since 2016, and the new electric reachstackers scheduled for delivery in Q4 2026 build on this long-standing collaboration. The fleet already includes Kalmar electric forklifts and ECO reachstackers, supporting our ongoing sustainability efforts.

Bjørn Engelsen, Terminal Director, YILPORT Oslo Terminal commented: "By choosing electric reachstackers, we aim to cut emissions while ensuring the uptime and performance our operations require. These new machines will help us operate more efficiently and sustainably."

This latest step underscores YILPORT's commitment to greener, more efficient terminal operations.

YILPORT Stockholm Nord Investing in Sustainable Rail Logistics Across Europe

YILPORT Stockholm Nord continues to strengthen its rail operations and intermodal transport capacity in line with its sustainable logistics vision.

As part of ongoing efforts to build a more efficient, environmentally friendly and seamless supply chain across Europe, 70 new open rail wagons have been added to the fleet during the year. This investment not only increases overall transport capacity but also supports a more sustainable logistics structure with reduced emissions per transported unit.

Through close cooperation with AXESS Logistics, significant operational improvements have been implemented for Stockholm customers, resulting in a 50% increase in train capacity. With the new configuration, capacity has been raised from 120 wagons to 180 wagons per train. This improvement enhances operational efficiency while enabling larger volumes to be transported in a single departure, creating both time and cost advantages across the supply chain.

In addition, daily return services between the Rosersberg hub and Gothenburg and Malmö further strengthen connectivity across Scandinavia and into wider Europe. These regular services provide customers with greater flexibility in planning, while ensuring a more stable and predictable cargo flow.

Overall, these developments reflect YILPORT Stockholm Nord's continued commitment to expanding capacity, improving efficiency, and advancing more sustainable transport solutions for the future.



YILPORT Stockholm Nord

IBERIA REGIONAL INFORMATION

Located in the Iberian Peninsula, YILPORT's multipurpose terminals provide the best solutions across different coasts of Portugal and Spain at the heart of key industrial zones. These terminals offer close connectivity to main highways and easy access. YILPORT Leixões, Liscont, Sotagus, Setúbal, Tersado, Figueira da Foz, Aveiro, Huelva, and Ferrol terminals are utilized with bonded and non-bonded areas, warehouses and supported by end-to-end logistic services.



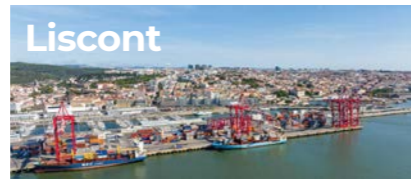
Leixões



Aveiro



F. da Foz



Liscont



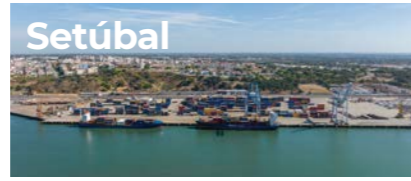
Sotagus



Elvas



Tersado



Setúbal



Ferrol



Huelva

Q1 - 2025
Regional
Throughputs



Container
341,682
TEUs



General Cargo
847,253
TONs



Ro-Ro
15,891
CEUs



YILPORT Holding Iberia Region Sales and Marketing Contact



Head Office:
global.commercial.dg@yilport.com

Region: **Ciro ANTEGHINI**
ciro.anteghini@yilport.com

10 Years Anniversary of Iberia

A Decade of Growth in the Iberian Peninsula

On February 19, YILPORT Iberia marked its 10th anniversary, celebrating a decade defined by growth, operational development, and strategic expansion across Portugal and Spain.

Since becoming part of the Iberian port landscape, YILPORT Iberia has grown into a network of 10 terminals, playing an increasingly important role in regional logistics and international trade. Over the years, the company has focused on strengthening operational efficiency, modernizing infrastructure, and investing in innovative solutions to support customers and partners in a dynamic and competitive environment.

This journey has also been shaped by a strong commitment to people and long-term development. With more than 500 professionals across the Iberian Peninsula,

YILPORT Iberia has built a diverse and skilled team, contributing to operational excellence and sustainable growth. As part of a global terminal operator, the company continues to reinforce its strategic position while supporting the evolution of port operations in the region.

Celebrating this 10 years milestone represents an important moment in YILPORT Iberia's history, reflecting past achievements while reinforcing the company's ambition to continue growing, innovating, and contributing to the future of the logistics and maritime sector.



Robert Yüksel YILDIRIM
Owner, Chairman and CEO

Iberia has built a diverse and skilled team, contributing to operational excellence and sustainable growth. As part of a global terminal operator, the company continues to reinforce its strategic position while supporting the evolution of port operations in the region.

Celebrating this 10 years milestone represents an important moment in YILPORT Iberia's history, reflecting past achievements while reinforcing the company's ambition to continue growing, innovating, and contributing to the future of the logistics and maritime sector.

GROWTH, DEVELOPMENT AND FUTURE VISION

YILPORT Iberia marked its 10th anniversary with an official celebration held on March 31, 2026, at SUD Hall in Lisbon, bringing together key stakeholders, customers, and partners to commemorate a decade of sustained growth and operational excellence across its 10 terminals in the Iberian Peninsula.

The event welcomed over 150 participants, including representatives from YILPORT Holding, reinforcing the company's strong network and long-term partnerships. The evening was highlighted by the presence of Robert Yüksel YILDIRIM, President & CEO of YILPORT Holding, who opened the dinner with a speech reflecting on the company's achievements and continued investment in the region.

More than a celebration, the occasion underscored YILPORT Iberia's commitment to delivering value to its customers, driven by innovation, reliability, and collaboration. The evening served as both a milestone and a forward-looking statement, reaffirming the company's focus on strengthening partnerships and supporting future growth across the Iberian Peninsula.



Watch 10th Year Video
on YouTube



Citrus Open Day - Building Portugal's Most Import Corridor

On March 25, 2026, YILPORT Iberia hosted the Citrus Open Day at the new Liscont facilities in Lisbon. The event brought together brokers, key customers, and logistics stakeholders to showcase YILPORT's latest investments and explore routing South African citrus through Liscont and the new YILPORT Elvas dry port.

Guests toured Liscont's modern inspection facilities, seeing firsthand how the improvements reduce turnaround times and enhance the experience for importers and exporters. The event also highlighted YILPORT Elvas, which extends operations inland and provides added flexibility during peak citrus season. Together, YILPORT Liscont and YILPORT Elvas form an integrated corridor, enabling citrus to move efficiently from Lisbon to inland distribution points and across Iberian markets.

The Open Day demonstrated YILPORT Iberia's commitment to modern infrastructure, advanced inspection capabilities, and integrated port-to-inland logistics. By strengthening partnerships and providing reliable, high-standard services, the company positions its terminals as key gateways for refrigerated cargo and fresh produce.

Nuno David SILVA
YILPORT Iberia Regional GM



YILPORT Elvas Inland Terminal: Expanding Iberian Operations

YILPORT Elvas, the new dry port of YILPORT Iberia, marks a strategic expansion of the group's network, bringing operations closer to the Alentejo and Extremadura markets. Located near the Portugal-Spain border, the 9.579 m² facility connects road and rail to major Iberian ports, offering fast, flexible, and reliable cargo movement.

The dry port combines state-of-the-art dry and cold warehouses, bonded storage, container handling and repair areas, and a dedicated Portuguese Tax Authority department. With 1.900 TEU container capacity and full customs and phytosanitary inspection capabilities, YILPORT Elvas allows import processes to be delayed until cargo is needed in the final markets, optimizing supply chains and boosting operational efficiency.

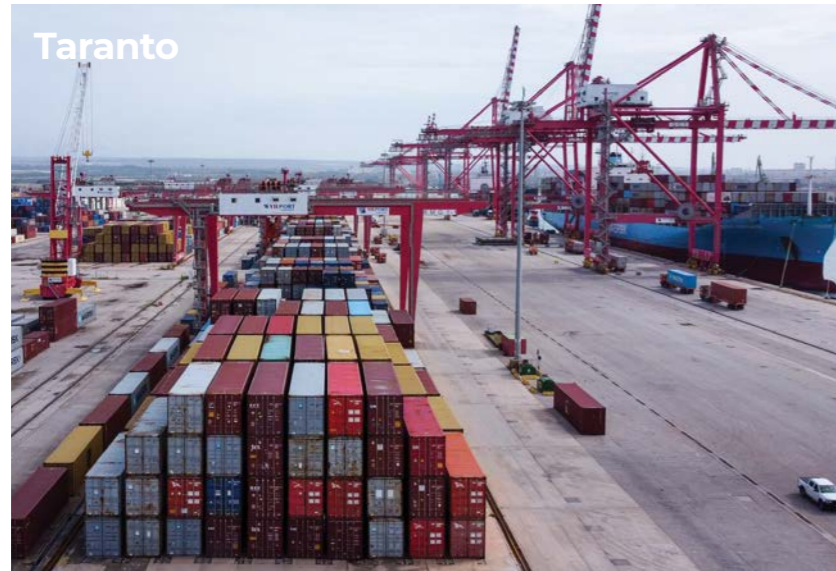
Equipped with advanced facilities and strict safety standards, the new dry port ensures cargo integrity and seamless logistics. YILPORT Elvas strengthens YILPORT Iberia's portfolio, reinforcing the group's leadership in the Iberian Peninsula while delivering high-standard, efficient, and fully integrated logistics solutions.

YILPORT Elvas Dry Port,
Portugal

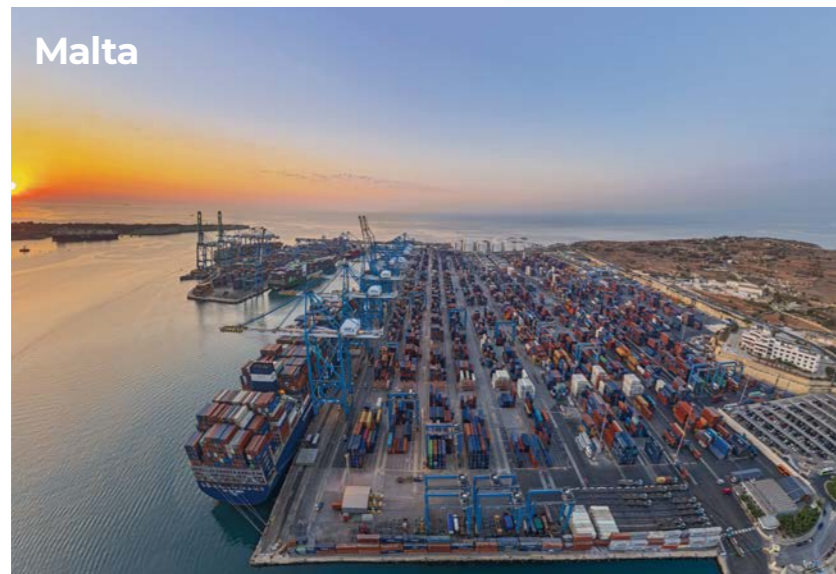


MEDITERRANEAN REGIONAL INFORMATION

Located in Mediterranean region, YILPORT's Mediterranean terminals offer hubs and home terminals for container, general - bulk and Ro-Ro operations, and provide easy access to roads and logistics services. YILPORT Taranto SCCT, Malta Freeport are utilised with bonded and non-bonded areas, warehouses and supported by end-to-end logistic services.



Taranto



Malta

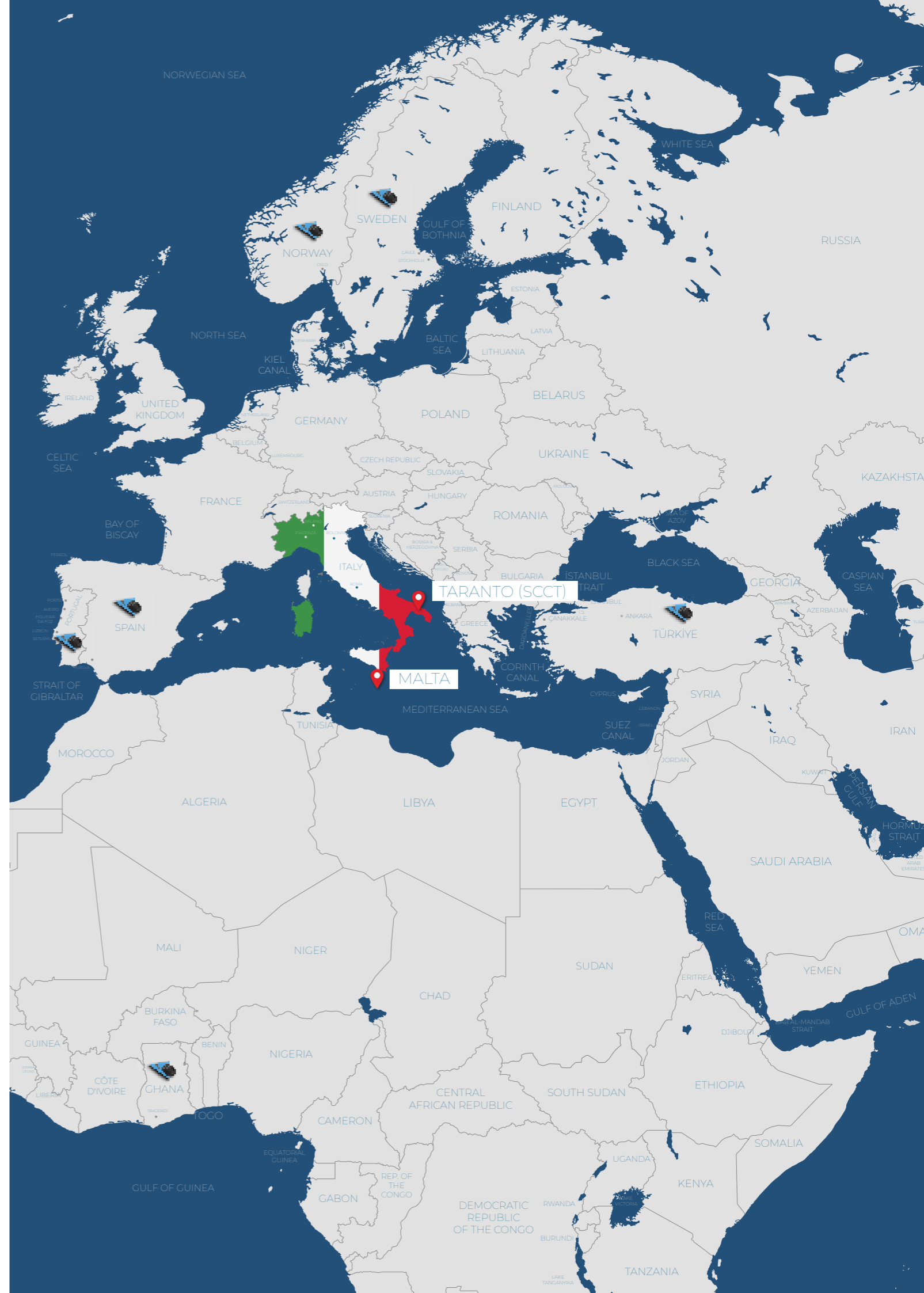
Q2 - 2025 Regional Throughputs



Container
648,054
TEUs



General Cargo
22,733
TONs



YILPORT Holding Mediterranean Region Sales and Marketing Contact

YILPORT Taranto San Cataldo
Container Terminal

Region: erhan.erkeker@yilport.com
erhan.erkeker@yilport.com

Head Office: Sales & Marketing
global.commercial.dg@yilport.com

Malta Freeport Terminal:
marketing@maltafreeport.com.mt
www.maltafreeport.mt



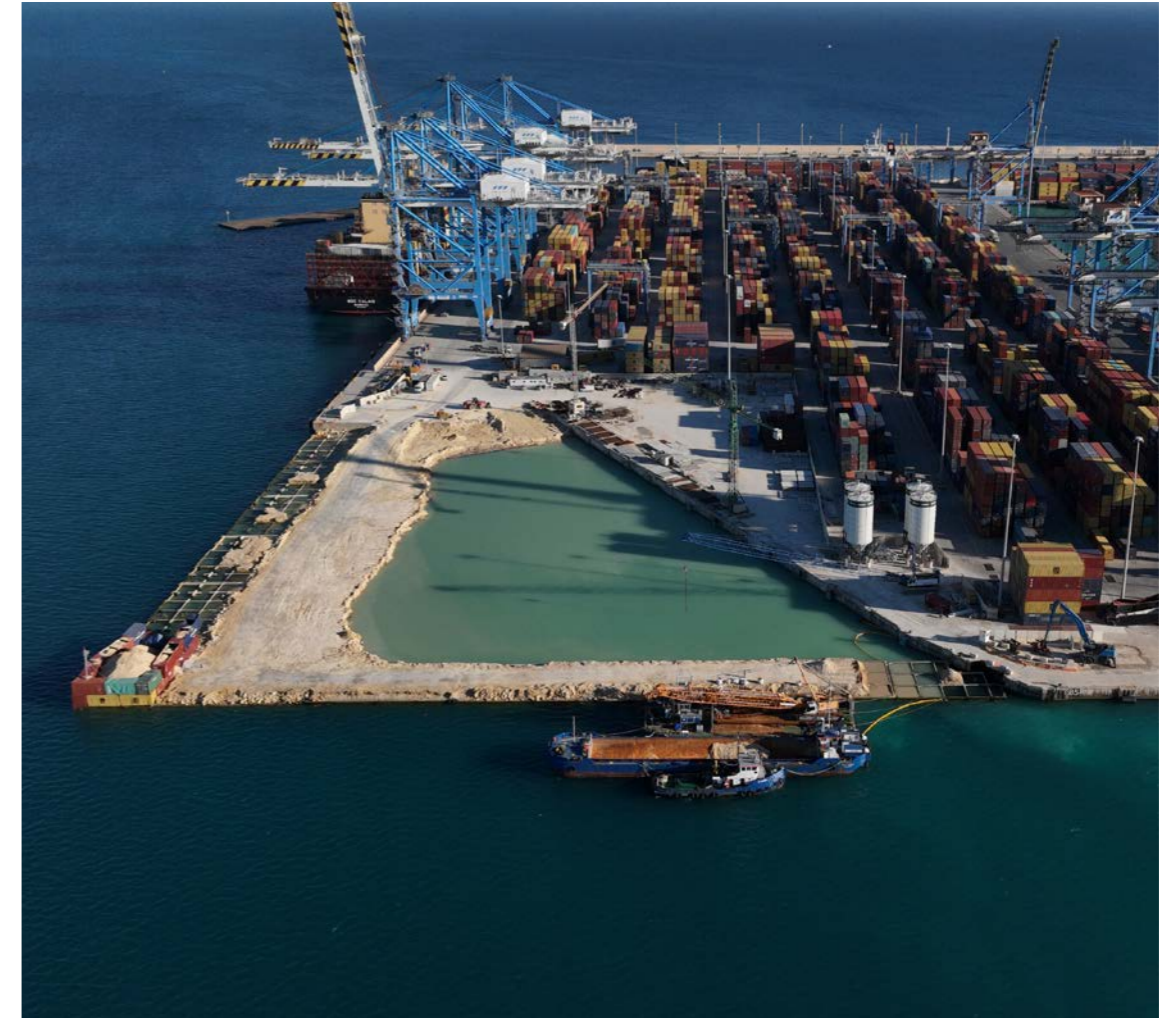


MSC Sixin at Malta Freeport Terminal

Malta Freeport Terminal has welcomed MSC Sixin, one of the world's largest container vessels. Measuring approximately 400 metres in length, with a beam of 61 metres and a carrying capacity of 23,756 TEUs, the vessel was built in 2019 and is part of MSC's Gulsun-class fleet.

During the operation at Terminal One North Quay, four megamax quay cranes were deployed simultaneously, enabling loading and discharge processes to be completed with high efficiency and strong coordination. This operation once again demonstrated the terminal's capability to handle mega vessels.

Operating on the Jade service, MSC Sixin connects major global trade routes, linking Asia with Europe and beyond, and continues to play a critical role in international logistics flows.



Malta Freeport Terminal Squaring-Off Project Moves Forward

Malta Freeport continues to make significant strides in terminal development with steady progress on its Squaring-Off Project. Building on the initial Digital Twin initiative launched with Next Port AI, this next phase focuses on expanding quay lengths, optimizing berth configurations, and preparing the terminal to handle next-generation ultra-large vessels simultaneously.

Key developments in the project include:

- Completion of the North Quay and West Quay formation
- Placement of French drain material and general reclamation fill
- Casting of precast elements progressing as planned to support upcoming project phases

Once completed, the project will enhance Malta Freeport Terminals operational efficiency, expand its capacity, and strengthen the terminal's future-oriented vision.



Strengthening Communities Through Impactful CSR Initiatives

As part of the Company's CSR initiatives, Malta Freeport Terminal kicked off the year by giving back to the community in a meaningful way. A dedicated group of employees volunteered at a local soup kitchen, helping to prepare and serve lunch to those who rely on this essential service. In addition to their hands-on contribution, MFT donated essential food boxes, made possible through the generous support of our shipping agents, suppliers, and hauliers. This collective effort enabled us to extend our reach and provide meaningful assistance to those most in need, reinforcing our commitment to making a positive impact in the communities we serve.

During this quarter, MFT continued to support initiatives that create a real difference within the community. Through employee-led donations, the Company was proud to support Hospice Malta and Puttinu Cares, both of which provide compassionate care and vital support to individuals and their families during challenging times. MFT is honoured to stand alongside these organisations and honoured to contribute towards such noble causes.

Investment in MFT's Personnel



Employees from across the Company including Engineering, Transformation, Human Resources, and Health & Safety participated in a Train-the-Trainer programme at the International Safety Training College. The programme was designed to equip participants with the knowledge, skills, and confidence required to deliver training effectively across the organisation.

During the sessions, participants explored practical training techniques, effective communication methods, and approaches to engage and support trainees. By developing internal trainers, MFT continues to strengthen knowledge sharing across teams while ensuring consistent training standards.

This initiative reflects Malta Freeport Terminals commitment to investing in its people, fostering professional growth, and maintaining high standards of operational excellence.

Supporting A Safe and Inclusive Maritime Industry

Malta Freeport Terminal actively supports industry initiatives that promote safety, inclusivity, and professional development across the maritime sector. MFT is pleased to be participating in the S.A.F.E. programme, organised by a government agency in Malta, which aims to enhance employee awareness, encourage self-care and foster healthier workplace practices. This engagement also strengthens internal policies, promotes responsible behaviour and ensures that the workplace is equipped with the knowledge and support needed to thrive.

In addition, MFT proudly supports WISTA Malta, an organisation dedicated to empowering women in Malta's maritime, trading, logistics, and related industries. Through these partnerships, MFT reinforces its role as a proactive contributor to the continued growth, safety and sustainability of the maritime sector.

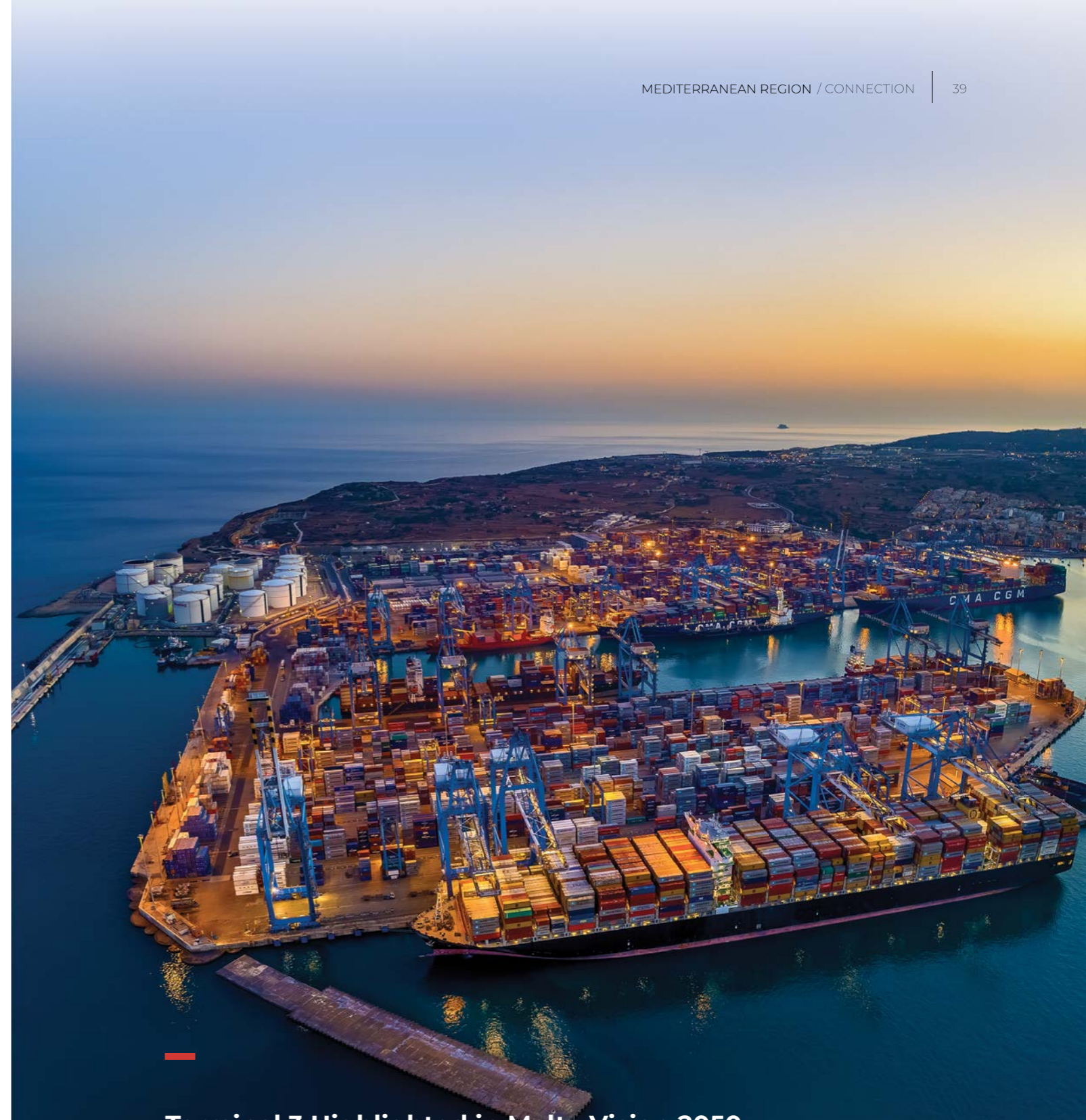


Malta Freeport Terminal Hosts the Civil Protection Department

Malta Freeport Terminals (MFT) organised a special familiarisation visit for all the teams at the Civil Protection Department (CPD). During the visit, the CPD team had the opportunity to see operations first-hand, understand safety processes, and engage directly with MFT personnel.

The Company believes that such visits play a key role in strengthening coordination, enhancing preparedness, and making operations safer and more efficient. They also provide a valuable platform for knowledge sharing and showcase collaboration in action.

Through initiatives like this, Malta Freeport Terminals continues to advance operational excellence, enhance safety, and foster cooperation across teams.



Terminal 3 Highlighted in Malta Vision 2050

Malta Freeport Terminal (MFT) is proud to announce that in February 2026, the development of Terminal 3 was recognized as a flagship project during the launch of Malta Vision 2050 by the Government of Malta. The national vision places strong emphasis on the shipping and maritime sector, particularly highlighting the proposed expansion of Freeport capacity through outward land reclamation.

This recognition underscores the strategic role of Freeport in the Maltese economy and marks a significant milestone toward sustainable and long-term growth.

Building the Future of Agro-Logistics in Southern Italy at Fruit Logistica Berlin 2026



At Fruit Logistica 2026 in Berlin, Southern Italy's agro-logistics potential took center stage as industry leaders came together to shape a more connected and competitive future.

Representing YILPORT, Regional Commercial Director **Ciro Anteghini**, Global Sales & Marketing Manager **Erhan Erkeker**, and Sales & Marketing Assistant Manager **Luca Maldera** engaged with key stakeholders, contributing to high-level discussions on unlocking new trade corridors and strengthening global market access.

A key highlight of the event was the session "Boosting Ionian Logistics: Port-Airport Regional Gateway to Global Markets," where public institutions and private sector leaders aligned around a shared ambition: transforming infrastructure into a true enabler of export growth.

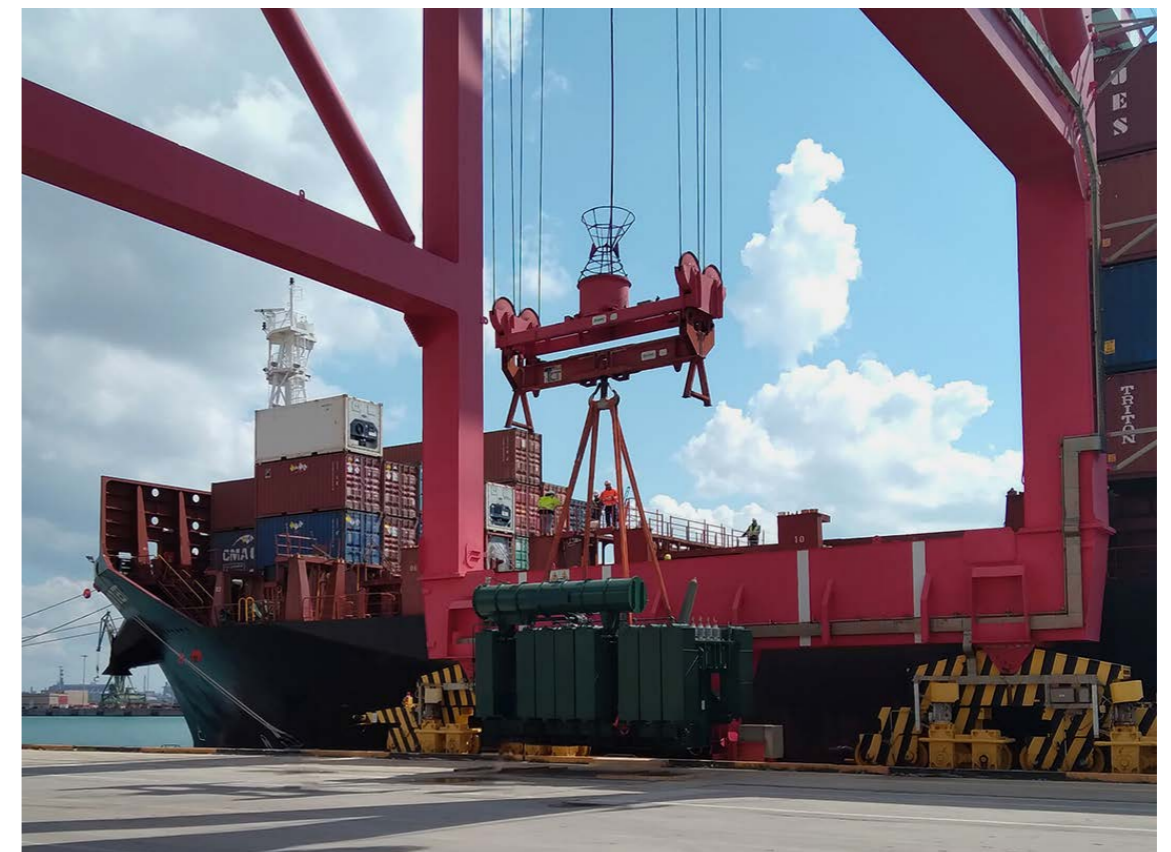
YILPORT Taranto Successfully Completes the Project Cargo Operation

Three oil-filled transformers, each weighing 61 tons, were safely discharged from M/V CMA-CGM QUEST, further demonstrating the terminal's capability in handling heavy-lift and oversized cargo operations.

With strong operational planning, coordinated execution, and the use of advanced handling equipment, the operation was completed safely, efficiently, and without disruption.



YILPORT Taranto San Cataldo Container Terminal continues to strengthen its role as a strategic gateway supporting industrial and project cargo logistics in the Mediterranean region.



LATAM REGIONAL INFORMATION

Located in Latin America region, YILPORT's multipurpose terminals offer the best solutions, at different coasts of Ecuador, Peru, El Salvador and Guatemala in the hearts of industrial zones. The terminals are closely connected to main highways offering easy access. YILPORT Puerto Bolívar, Paíta, Acajutla, La Unión and YILPORT Quetzal terminals are utilized with bonded and non-bonded areas, warehouses and supported by end-to-end logistic services.



Puerto Bolívar



Paíta



Acajutla



La Unión



Quetzal

**Q2 - 2025
Regional
Throughputs**



Container
335,921
TEUs



General Cargo
915,737
TONs



Liquid
123,364
M³



Ro-Ro
7,323
CEUs



YILPORT Holding Latam Region Sales and Marketing Contact

Head Office: Sales & Marketing
global.commercial.dg@yilport.com

Puerto Bolívar: Carolina BURGOS
carolina.burgos@yilport.com

Acajutla / La Unión: Reynaldo Nolasco
jose.nolasco@updp-sem.com





Nine Years Connecting Southern Ecuador to the World

YILPORT Puerto Bolívar celebrated its 9th anniversary, marking nearly a decade of growth, innovation, and shared progress. More than numbers, these nine years represent stories of opportunity, development, and the dedication of the teams who have transformed the terminal into a key gateway connecting southern Ecuador to the world.

Over the years, Puerto Bolívar has evolved remarkably, breaking records, expanding capacity, and introducing sustainable innovations that strengthen both operations and the local community. Each achievement reflects the commitment to creating jobs, fostering local development, and providing high-standard logistics solutions while caring for the environment.

This anniversary is above all a celebration of collective effort. It recognizes the dedication of every collaborator who has contributed to making Puerto Bolívar a symbol of pride, connection, and progress for the region, a terminal that not only moves cargo efficiently but also drives growth and opportunity for families and businesses alike.



YILPORT Puerto Bolívar Achieves Record-Breaking Results in 2025

YILPORT Latin America closed 2025 with outstanding results, marking a historic year for Puerto Bolívar. Total container movements soared from 199,187 TEUs in 2024 to 324,403 TEUs in 2025, a 63% increase, setting a new record for the terminal.

Import operations also saw remarkable growth, with a 74% increase in import cargo handling, fueled by the arrival of larger vessels and improved distribution capabilities across Ecuador. Notably, Puerto Bolívar welcomed the MSC Vega, the largest ship in its history till the date at 366 meters long and 48 meters wide, moving over 6,000 TEUs, symbolizing the terminal's operational capacity.

The terminal's growth extended beyond containers. General cargo increased steadily by 11%, with copper exports up 28%. Maritime connectivity reached new heights, with 436 vessels attended in 2025, a 39% rise from the previous year. December alone saw 41,689 TEUs moved, demonstrating that Puerto Bolívar is not just growing, it is setting new standards for efficiency, capacity, and service excellence in the region.





YILPORT Puerto Bolívar Breaks TEU Record with Single Vessel

In March 2026, YILPORT Puerto Bolívar set a new benchmark in port operations by handling 11,432 TEUs on a single vessel, the MSC Perle (366 m), the largest number ever recorded at the terminal. This milestone underscores Puerto Bolívar's strategic role as a hub for Ecuador's international trade.

While managing the MSC Perle, the terminal team simultaneously handled two additional vessels, the MSC Ronit (294 m) and the CS CARE, showcasing the terminal's robust infrastructure, advanced facilities, and operational efficiency in complex, large-scale operations.

This record highlights the professionalism, dedication, and expertise of the Puerto Bolívar team, ensuring safe, reliable, and efficient cargo movement. With this achievement, Puerto Bolívar strengthens its position as a cornerstone of logistics in Ecuador and the region, connecting local products to key global markets and setting new standards for terminal performance.



Why Puerto Bolívar?

Since day one, YILPORT Puerto Bolívar has committed itself to elevating growth, innovation, and global connectivity, progressing in the operations and empowering Ecuador's trade and logistics.

- World-class infrastructure and strategic location
- closest to the main production and distribution centers in southern Ecuador and northern Peru.
- Security Infrastructure and Technology - cargo, body, and luggage scanners, 240 CCTV cameras, Global Logistics Center for remote planning.
- Multipurpose flexibility: Containers, reefers, dry / breakbulk, and value-added CFS.
- Scalable capacity through a clear, funded, multi-phase roadmap
- Environmental and social commitment.
- Reliable partner backed by YILPORT's global port operations standards.



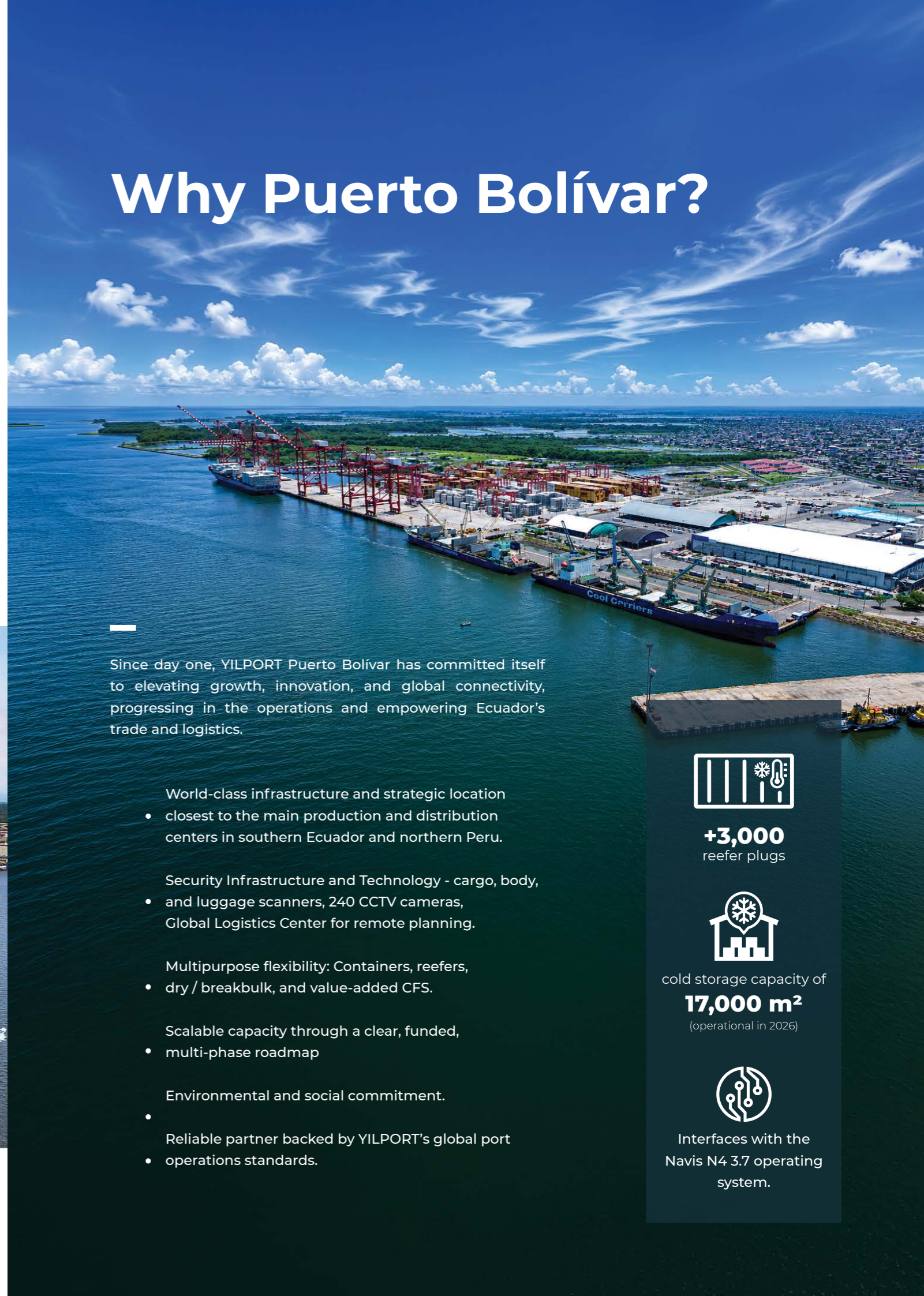
+3,000
reefer plugs



cold storage capacity of
17,000 m²
(operational in 2026)



Interfaces with the
Navis N4 3.7 operating
system.



AFRICA REGIONAL INFORMATION

YILPORT's entrance to the African port industry is a gemstone for YILPORT's growing vision in the African and Atlantic marine trade. The experience and process excellence methodology of YILPORT will boost efficiency, productivity.

YILPORT Africa terminals offer container, liquid, bulk and general cargo operations. Ever extending portfolio and network presence will be the brand signature on global reliability in operational excellence.



Q2 - 2025 Regional Throughputs



Container
12,239
TEUs



General Cargo
7,045
TONs



Ro-Ro
39
CEUs

YILPORT ATSL - Takoradi

YILPORT Holding Africa Region Sales and Marketing Contact

Head Office: Sales & Marketing
global.commercial.dg@yilport.com

Region: Erhan ERKEKER
erhan.erkeker@yilport.com



ATLANTIC OCEAN

YILPORT Holding Strengthens Operational Capacity in Ghana with 6 New Terberg Terminal Tractors



YILPORT Holding has reinforced its operational footprint at the YILPORT ATSL-Takoradi Terminal through the delivery and commissioning of six (6) new Terberg Terminal Tractors (TTs). The units officially commenced operations as of last Friday on the 27th of February.

As part of YILPORT Holding's operational excellence and terminal development program in Ghana, this fleet expansion supports higher productivity levels, improved operational efficiency, and enhanced service reliability across port operations, reinforcing the terminal's capacity to handle growing cargo volumes and supporting the terminal's increasing operational momentum.

Commenting on the terminal's development, **R. Cem GÖKTAŞ**, COO of YILPORT Holding, stated that the fleet expansion reflects the structured growth plan implemented since operations began in 2024 Q4. He emphasized that operational stabilization, service consistency, and productivity improvement remain core priorities, noting that the new tractors directly enhance yard efficiency and the terminal's ability to manage increasing cargo volumes.

Since commencing operations in 2024 Q4, YILPORT ATSL-Takoradi has recorded consistent year-on-year growth, effectively doubling throughput levels. This performance has been supported by rising trade demand and increased vessel calls.

In parallel with fleet expansion, the terminal received two (2) Mobile Harbour Cranes (MHCs). The additional cranes are expected to significantly enhance lifting capacity, berth productivity, and overall operational efficiency.



Chief Operating Officer
R. Cem GÖKTAŞ



YILPORT Africa General Manager
Ferhat AKKAYA

Ferhat AKKAYA, General Manager of YILPORT ATSL-Takoradi, and Regional GM noted that Ghana represents a strategic growth market within YILPORT's global portfolio. The disciplined capital deployment and equipment modernization are integral to long-term value creation, emphasizing that aligning infrastructure capacity with regional trade dynamics is essential to reinforcing Takoradi's competitive position in West Africa.

Through continued infrastructure investment and operational optimization at YILPORT ATSL-Takoradi Terminal, YILPORT Holding reaffirms its commitment to supporting Ghana's trade ecosystem and strengthening maritime connectivity across the region.



YILPORT ATSL-Takoradi Terminal Successfully Completes Project Cargo Operation of COSCO Vessel

YILPORT ATSL-Takoradi Terminal successfully completed the project cargo operation of the COSCO vessel MV HUI ZHI HAI.

The vessel berthed was carrying critical equipment for mining operations in Ghana. A total of 422 units, with a volume of approximately 10,521 cubic meters, were handled in line with the operational plan and in full compliance with high safety standards. All discharge operations were completed within three days, and the vessel departed the port on 10 March.

Throughout the operation, strong coordination among teams and effective on-site planning ensured a smooth and efficient process. Despite the time-sensitive nature of the operation, all customer requirements were met fully and on schedule.

Following the operation, COSCO Shipping Bulk shared a letter of appreciation, highlighting the professionalism of the YILPORT ATSL-Takoradi team, their strong coordination, and their valuable contribution to the successful completion of the process.

This successful operation once again demonstrated YILPORT's capability to deliver reliable and high-quality services across different cargo types, including project cargo, while further strengthening its collaboration with international partners.



YILPORT ATSL-Takoradi Terminal Received First Transshipment Vessel

YILPORT ATSL-Takoradi Terminal reached a new operational milestone with the berthing of the ONE (Ocean Network Express) transshipment vessel MV San Francisco. The vessel, measuring 300 meters in length, handled a total of 2,305 units, equivalent to 3,996 TEUs, marking a significant step in the terminal's capacity to manage large-scale transshipment operations efficiently.

This achievement underscores YILPORT ATSL-Takoradi's strategic role in regional maritime logistics and connectivity. With modern handling equipment, optimized yard layouts, and enhanced safety protocols, the terminal continues to strengthen its position as a reliable and efficient hub along the West African coast.

Through these developments, YILPORT ATSL-Takoradi contributes to fostering sustainable trade corridors, improving port infrastructure, and supporting Ghana's economic diversification. The successful operation of MV San Francisco reflects YILPORT's commitment to integrating advanced technology, sustainable practices, and world-class expertise into regional logistics, connecting West Africa with global trade routes.



YILPORT ATSL-Takoradi Terminal Successfully Completes General Cargo Operation

YILPORT ATSL-Takoradi Terminal has marked another operational milestone with the successful completion of a general cargo operation for the vessel MV UAL COLOGNE.

The operation covered 932 metric tons of cargo, including specialized project cargo, and was executed with high efficiency and strong team coordination. The terminal also demonstrated its capability in heavy-lift handling, achieving a single-lift capacity of 110 tons.

Throughout the operation, key terminal equipment and resources were deployed to ensure a smooth workflow and strict adherence to safety standards. The scope also included container restowage activities and the discharge of full containers, all managed seamlessly within the operational timeline.



This successful project once again highlights YILPORT ATSL-Takoradi Terminal's strategic role in supporting complex maritime operations, reinforcing its position within YILPORT Holding as a reliable hub for high-tonnage and specialized cargo in the West African region.



The YILPORT Global Logistics Center is not only a technological powerhouse but also a hub for fostering efficiency and the exchange of best practices among terminals.



Efficiency
Through Centralization



Knowledge Exchange
& Collaboration



Data Control
& Reporting



Global Deployment
of Best Practices



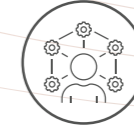
Planning Critical
Aspects of Operations



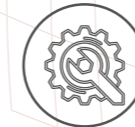
Customer Service for
Customer-Centric Approach



Continuous Improvement
by Advanced Technologies



Harnessing Employee
Expertise



Operational Efficiency
Through Optimization



JOIN US

PEOPLE

At YILPORT, we know that people are the most important asset for a company. In a culture where four generations work together, we combine the experience of senior employees with the latest knowledge from recent graduates.

PROCESS

YILPORT integrated management systems are designed to offer best solutions to its valuable business partners. YILPORT seeks to enable organizational excellence through its processes. Ever-growing company prioritizes its portfolio road map within the light of business oriented approach.

TECHNOLOGY

YILPORT continuously acquires State-of-the-Art equipment and latest hardware & software developments for optimization, simulation for scalability of business to analyze each and every step of supply chain management with key performance indicators.



YILPORT Gebze Terminal Welcomes Future Logistics Leaders from Samsun University

YILPORT Türkiye welcomed students from Samsun University's Maritime Management program to the YILPORT Gebze Terminal.

Following an engaging presentation by our sales team, students had the unique opportunity to experience port operations firsthand during a technical tour, gaining valuable insights into the dynamic maritime sector.



YILPORT Gebze Terminal Inspires the Next Generation Through GREENPORT Project

As part of the GREENPORT Project, YILPORT Global Operations Manager Veysel Sekin came together with students from Piri Reis University to share his knowledge and experience on sustainable and efficient port operations.

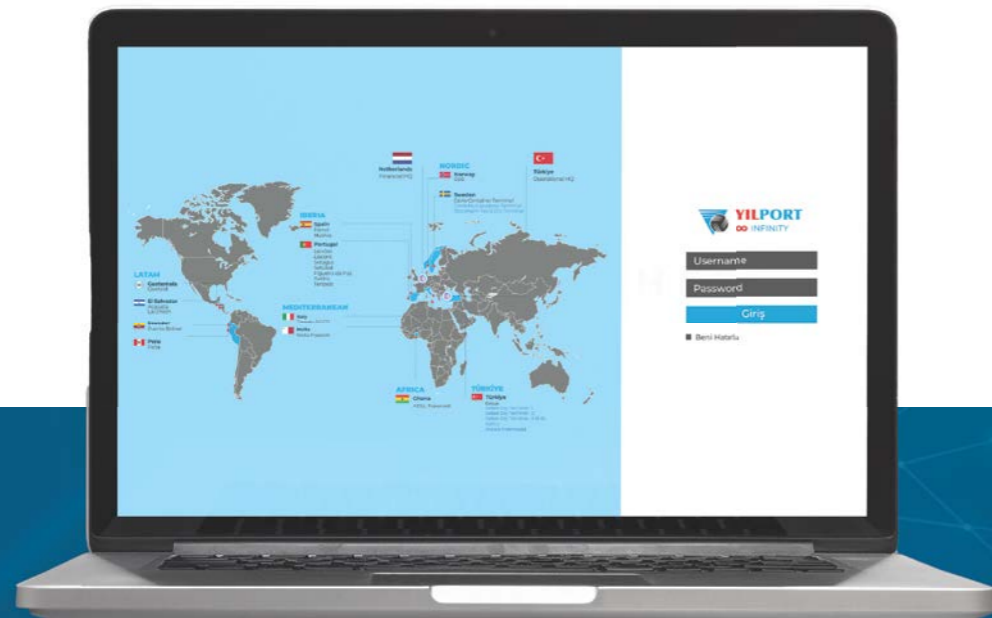
During the session, the critical role of operational efficiency, digitalization, and sustainability in modern port management was addressed through practical, real-life examples. Participants gained valuable insights into current industry dynamics.

This engagement with future maritime professionals provided an inspiring platform for knowledge exchange and meaningful interaction within the sector.



Privilege Becomes E-Standard!

YILPORT is fully committed to using its all endeavors for providing the utmost service with the in-house expertise.



Scan QR Code to Discover

Infinity Community Access Portal Offers:



Elevated operational productivity



Enhanced service delivery



Transparent and streamlined planning processes



Accelerated throughput times

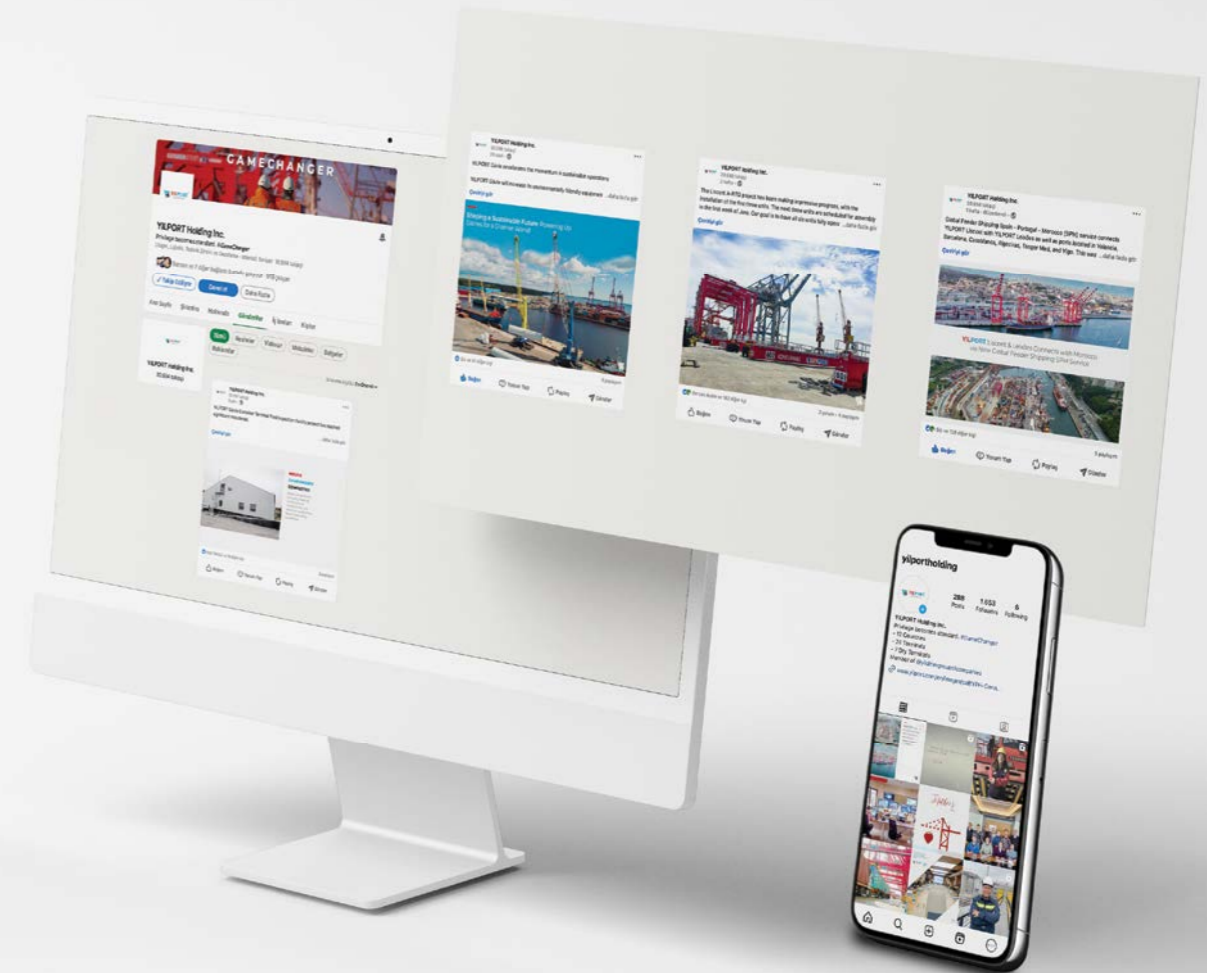


Optimal utilization of information



Adaptable and customizable reporting features

<https://infinity.yilport.com>



FOLLOW US ON

Instagram

#yilport



LinkedIn

#yilport



www.yilport.com



GAMECHANGER

IN PORT OPERATIONS AND MANAGEMENT

Global Reach

YILPORT Holding Inc. was established in August 2011. The company globally operates 22 marine ports and terminals: 2 in Türkiye, 7 in Portugal, 2 in Sweden, 2 in Spain, 2 in El Salvador, 1 in Norway, 1 in Malta, 1 in Italy, 1 in Ecuador, 1 in Peru, 1 in Guatemala, and 1 in Ghana. In addition, YILPORT operates 6 dry terminals, 3 in Türkiye, 1 in Sweden, 1 in Portugal and 1 in Ghana.

Also Transitem, global logistics and forwarding company is part of Corex Shipping & Logistics under CoreX Holding B.V.

YILPORT Holding

